

## Product Datasheet

### SHANK3 Antibody (orb1238987)

**Description**

SHANK3 Antibody

**Species/Host**

Rabbit

**Reactivity**

Human, Mouse

**Conjugation**

Unconjugated

**Tested**

ELISA, IF, IHC-P, WB

**Applications**
**Immunogen**

SHANK3 antibody was raised against a 19 amino acid synthetic peptide near the center of human SHANK3. The immunogen is located within amino acids 890 - 940 of SHANK3.

**Target**

SHANK3

**Preservatives**

SHANK3 Antibody is supplied in PBS containing 0.02% sodium azide.

**Form/Appearance**

Liquid

**Concentration**

1 mg/mL

**Storage**

SHANK3 antibody can be stored at 4°C for three months and -20°C, stable for up to one year. As with all antibodies care should be taken to avoid repeated freeze thaw cycles. Antibodies should not be exposed to prolonged high temperatures.

**Note**

For research use only

**Application notes**

SHANK3 antibody can be used for detection of SHANK3 by Western blot at 1 µg/mL. Antibody can also be used for immunohistochemistry starting at 2.5 µg/mL. For immunofluorescence start at 2.5 µg/mL. Antibody validated: Western Blot in mouse samples; Immunohistochemistry in human samples and Immunofluorescence in human samples. All other applications and species not yet tested.

**Isotype**

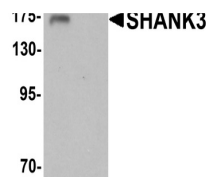
IgG

**Clonality**

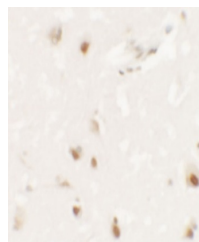
Polyclonal

**Uniprot ID**
**Q9BYB0**
**NCBI**
**NP\_001073889**
**Dilution Range**

SHANK3 antibody can be used for detection of SHANK3 by Western blot at 1 µg/mL. Antibody can also be used for immunohistochemistry starting at 2.5 µg/mL. For immunofluorescence start at 2.5 µg/mL. Antibody validated: Western Blot in mouse samples; Immunohistochemistry in human samples

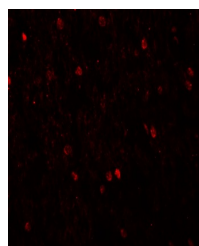
**A B**


Western blot analysis of SHANK3 in 3T3 c...



Immunohistochemistry of SHANK3 in human

...



Immunofluorescence of SHANK3 in human br...