

Product Datasheet

SHBG Antibody (orb1238986)

Description

SHBG Antibody

Species/Host

Rabbit

Reactivity

Human, Mouse, Rat

Conjugation

Unconjugated

Tested

ELISA, IF, WB

Applications

Immunogen

SHBG antibody was raised against a 16 amino acid peptide near the center of human SHBG. The immunogen is located within amino acids 220 - 270 of SHBG.

Target

SHBG

Preservatives

SHBG antibody is supplied in PBS containing 0.02% sodium azide.

Form/Appearance

Liquid

Concentration

1 mg/mL

Storage

Store at 4°C for up to one year. Antibodies should not be exposed to prolonged high temperatures

Note

For research use only

Application notes

SHBG antibody can be used for detection of SHBG by Western blot at 1 - 2 µg/ml. For immunofluorescence start at 20 µg/mL. Antibody validated: Western Blot in human samples and Immunofluorescence in mouse samples. All other applications and species not yet tested.

Isotype

IgG

Clonality

Polyclonal

MW

Predicted: 25, 26, 31, 32, 38, 44 kDa Observed: 35 kDa

Uniprot ID

[P04278](#)

NCBI

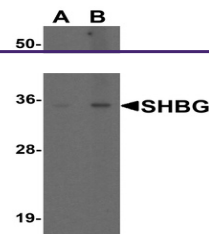
[NP_001031](#)

Dilution Range

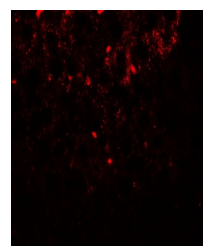
SHBG antibody can be used for detection of SHBG by Western blot at 1 - 2 µg/ml. For immunofluorescence start at 20 µg/mL. Antibody validated: Western Blot in human samples and Immunofluorescence in mouse samples. All other applications and species not yet tested.

Expiration Date

12 months from date of receipt.



Western blot analysis of SHBG in human liver tissue.



Immunofluorescence of SHBG in mouse liver tissue.