

Product Datasheet

SIGLEC15 Antibody (orb1238977)

Description

SIGLEC15 Antibody

Species/Host

Rabbit

Reactivity

Human, Mouse, Rat

Conjugation

Unconjugated

Tested

ELISA, IHC-P, WB

Applications

Immunogen

SIGLEC15 antibody was raised against a 15 amino acid synthetic peptide near the amino terminus of human SIGLEC15. The immunogen is located within amino acids 50 - 100 of SIGLEC15.

Target

SIGLEC15

Preservatives

SIGLEC15 Antibody is supplied in PBS containing 0.02% sodium azide.

Form/Appearance

Liquid

Concentration

1 mg/mL

Storage

SIGLEC15 antibody can be stored at 4°C for three months and -20°C, stable for up to one year. As with all antibodies care should be taken to avoid repeated freeze thaw cycles. Antibodies should not be exposed to prolonged high temperatures.

Note

For research use only

Application notes

SIGLEC15 antibody can be used for detection of SIGLEC15 by Western blot at 1 - 2 µg/mL. Antibody can also be used for immunohistochemistry starting at 2.5 µg/mL. Antibody validated: Western Blot in human samples and Immunohistochemistry in human samples. All other applications and species not yet tested.

Isotype

IgG

Clonality

Polyclonal

MW

Predicted: 36 kDa Observed: 42 kDa

Uniprot ID

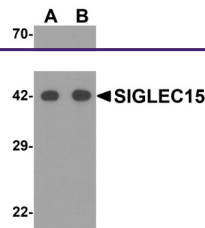
[Q6ZMC9](#)

NCBI

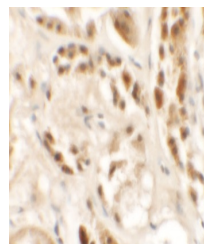
[NP_998767](#)

Dilution Range

SIGLEC15 antibody can be used for detection of SIGLEC15 by Western blot at 1 - 2 µg/mL. Antibody can also be used for immunohistochemistry starting at 2.5 µg/mL. Antibody validated: Western Blot in human samples and Immunohistochemistry in human samples. All other applications and species not yet tested.



Western blot analysis of SIGLEC15 in hum...



Immunohistochemistry of SIGLEC15 in huma...