

Product Datasheet

SIPA1L1 Antibody (orb1238970)

Description

SIPA1L1 Antibody

Species/Host

Rabbit

Reactivity

Human, Mouse, Rat

Conjugation

Unconjugated

Tested

ELISA, IF, IHC-P, WB

Applications
Immunogen

SIPA1L1 antibody was raised against a 16 amino acid synthetic peptide from near the amino terminus of human SIPA1L1. The immunogen is located within amino acids 40 - 90 of SIPA1L1.

Target

SIPA1L1

Preservatives

SIPA1L1 Antibody is supplied in PBS containing 0.02% sodium azide.

Form/Appearance

Liquid

Concentration

1 mg/mL

Storage

SIPA1L1 antibody can be stored at 4°C for three months and -20°C, stable for up to one year. As with all antibodies care should be taken to avoid repeated freeze thaw cycles. Antibodies should not be exposed to prolonged high temperatures.

Note

For research use only

Application notes

SIPA1L1 antibody can be used for detection of SIPA1L1 by Western blot at 0.5 - 1 µg/mL. Antibody can also be used for immunohistochemistry starting at 5 µg/mL. For immunofluorescence start at 20 µg/mL. Antibody validated: Western Blot in rat samples; Immunohistochemistry in human samples and Immunofluorescence in human samples. All other applications and species not yet tested.

Isotype

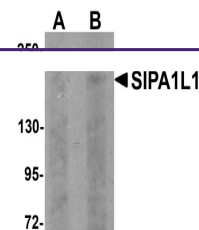
IgG

Clonality

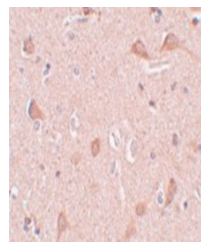
Polyclonal

Uniprot ID
O43166
NCBI
NP_056371
Dilution Range

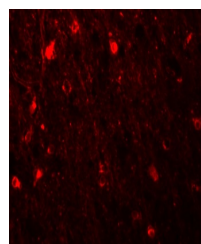
SIPA1L1 antibody can be used for detection of SIPA1L1 by Western blot at 0.5 - 1 µg/mL. Antibody can also be used for immunohistochemistry starting at 5 µg/mL. For immunofluorescence start at 20 µg/mL. Antibody validated: Western Blot in rat samples; Immunohistochemistry in human samples



Western blot analysis of SIPA1L1 in rat ...



Immunohistochemistry of SIPA1L1 in human...



Immunofluorescence of SIPA1L1 in human b...