

## Product Datasheet

### SKIV2L Antibody (orb1238962)

## Description

SKIV2L Antibody

### Species/Host

Rabbit

### Reactivity

Human, Mouse, Rat

### Conjugation

Unconjugated

### Tested Applications

ELISA, IF, IHC-P, WB

### Immunogen

SKI2W antibody was raised against a 16 amino acid peptide near the amino terminus of human SKI2W. The immunogen is located within amino acids 60 - 110 of SKI2W.

### Target

SKIV2L

### Preservatives

SKI2W antibody is supplied in PBS containing 0.02% sodium azide.

### Form/Appearance

Liquid

### Concentration

1 mg/mL

### Storage

SKI2W antibody can be stored at 4°C for three months and -20°C, stable for up to one year.

### Note

For research use only

### Application notes

SKI2W antibody can be used for detection of SKI2W by Western blot at 1 - 2 µg/ml. Antibody can also be used for immunohistochemistry starting at 5 µg/mL. For immunofluorescence start at 20 µg/mL. Antibody validated: Western Blot in mouse samples; Immunohistochemistry in human samples and Immunofluorescence in human samples. All other applications and species not yet tested.

### Isotype

IgG

### Clonality

Polyclonal

### MW

Predicted: 113, 137 kDa Observed: 135 kDa

### Uniprot ID

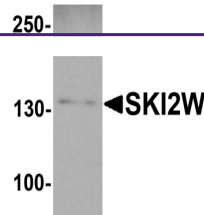
[Q15477](#)

### NCBI

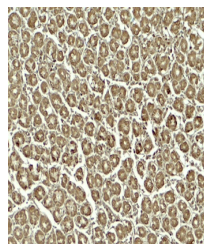
[NP\\_008860](#)

### Dilution Range

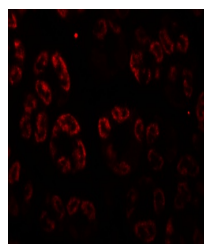
SKI2W antibody can be used for detection of SKI2W by Western blot at 1 - 2 µg/ml. Antibody can also be used for immunohistochemistry starting at 5 µg/mL. For immunofluorescence start at 20 µg/mL. Antibody validated: Western Blot in mouse samples; Immunohistochemistry in human samples and Immunofluorescence in human samples. All other applications and species not yet tested.



Western blot analysis of SKI2W in mouse ...



Immunohistochemistry of SKI2W in human s...



Immunofluorescence of SKI2W in human sto...