

## Product Datasheet

### SKI Antibody (orb1238961)

**Description**
**Ski Antibody**
**Species/Host**

Rabbit

**Reactivity**

Human

**Conjugation**

Unconjugated

**Tested**

ELISA, IF, WB

**Applications**
**Immunogen**

Ski antibody was raised against a 14 amino acid synthetic peptide from near the amino terminus of human Ski. The immunogen is located within the first 50 amino acids of Ski.

**Target**

SKI

**Preservatives**

Ski Antibody is supplied in PBS containing 0.02% sodium azide.

**Form/Appearance**

Liquid

**Concentration**

1 mg/ml

**Storage**

Ski antibody can be stored at 4°C for three months and -20°C, stable for up to one year. As with all antibodies care should be taken to avoid repeated freeze thaw cycles. Antibodies should not be exposed to prolonged high temperatures.

**Note**

For research use only

**Application notes**

SkiP antibody can be used for detection of Ski by Western blot at 1 - 2 µg/mL. Antibody can also be used for immunohistochemistry starting at 20 µg/mL. For immunofluorescence start at 20 µg/mL. Antibody validated: Western Blot in human samples and Immunofluorescence in human samples. All other applications and species not yet tested.

**Isotype**

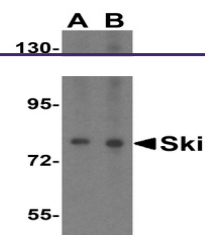
IgG

**Clonality**

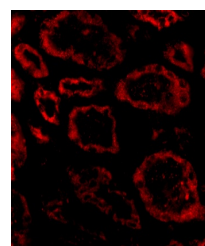
Polyclonal

**Uniprot ID**
**P12755**
**NCBI**
**P12755**
**Dilution Range**

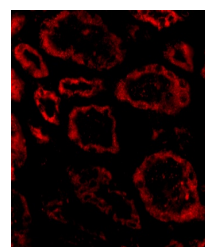
SkiP antibody can be used for detection of Ski by Western blot at 1 - 2 µg/mL. Antibody can also be used for immunohistochemistry starting at 20 µg/mL. For immunofluorescence start at 20 µg/mL. Antibody validated: Western Blot in human samples and Immunofluorescence in human samples. All other applications and species not yet tested.



Western blot analysis of Ski in HeLa cel...



Immunofluorescence of Ski in human kidne...



Immunofluorescence of Ski in Human Kidne...