

Product Datasheet

SLAIN1 Antibody (orb1238959)

Description

SLAIN1 Antibody

Species/Host

Rabbit

Reactivity

Human, Mouse, Rat

Conjugation

Unconjugated

Tested

ELISA, IF, WB

Applications

Immunogen

SLAIN1 antibody was raised against an 15 amino acid synthetic peptide near the carboxy terminus of human SLAIN1. The immunogen is located within the last 50 amino acids of SLAIN1.

Target

SLAIN1

Preservatives

SLAIN1 Antibody is supplied in PBS containing 0.02% sodium azide.

Form/Appearance

Liquid

Concentration

1 mg/mL

Storage

SLAIN1 antibody can be stored at 4°C for three months and -20°C, stable for up to one year. As with all antibodies care should be taken to avoid repeated freeze thaw cycles. Antibodies should not be exposed to prolonged high temperatures.

Note

For research use only

Application notes

SLAIN1 antibody can be used for detection of SLAIN1 by Western blot at 1 µg/mL. Antibody can also be used for immunofluorescence starting at 2.5 µg/mL. For immunofluorescence start at 20 µg/mL. Antibody validated: Western Blot in human samples and Immunofluorescence in human samples. All other applications and species not yet tested.

Isotype

IgG

Clonality

Polyclonal

Uniprot ID

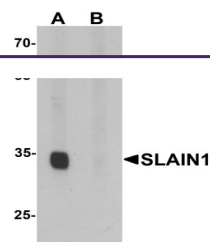
[Q8ND83](#)

NCBI

[NP_002456](#)

Dilution Range

SLAIN1 antibody can be used for detection of SLAIN1 by Western blot at 1 µg/mL. Antibody can also be used for immunofluorescence starting at 2.5 µg/mL. For immunofluorescence start at 20 µg/mL. Antibody validated: Western Blot in human samples and Immunofluorescence in human samples. All other applications and species not yet tested.



Western blot analysis of SLAIN1 in A549 ...



Immunofluorescence of SLAIN1 in A549 cel...