

Product Datasheet

LY9 Antibody (orb1238957)

Description

LY9 Antibody

Species/Host

Rabbit

Reactivity

Human, Mouse, Rat

Conjugation

Unconjugated

Tested

ELISA, ICC, IF, WB

Applications

Immunogen

SLAMF3 antibody was raised against an 18 amino acid synthetic peptide near the carboxy terminus of human SLAMF3. The immunogen is located within amino acids 520 - 570 of SLAMF3.

Target

LY9

Preservatives

SLAMF3 Antibody is supplied in PBS containing 0.02% sodium azide.

Form/Appearance

Liquid

Concentration

1 mg/mL

Storage

SLAMF3 antibody can be stored at 4°C for three months and -20°C, stable for up to one year. As with all antibodies care should be taken to avoid repeated freeze thaw cycles. Antibodies should not be exposed to prolonged high temperatures.

Note

For research use only

Application notes

SLAMF3 antibody can be used for detection of SLAMF3 by Western blot at 1 - 2 µg/mL. Antibody can also be used for immunocytochemistry starting at 10 µg/mL. For immunofluorescence start at 20 µg/mL. Antibody validated: Western Blot in human samples; Immunocytochemistry in human samples and Immunofluorescence in human samples. All other applications and species not yet tested.

Isotype

IgG

Clonality

Polyclonal

Uniprot ID

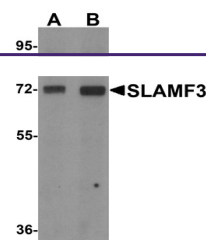
[Q9HBG7](#)

NCBI

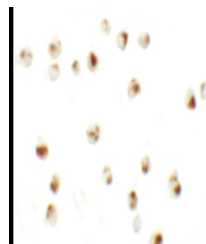
[NP_1769](#)

Dilution Range

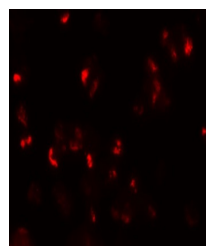
SLAMF3 antibody can be used for detection of SLAMF3 by Western blot at 1 - 2 µg/mL. Antibody can also be used for immunocytochemistry starting at 10 µg/mL. For immunofluorescence start at 20 µg/mL. Antibody validated: Western Blot in human samples; Immunocytochemistry in human samples and



Western blot analysis of SLAMF3 in 293 c...



Immunocytochemistry of SLAMF3 in 293 cel...



Immunofluorescence of SLAMF3 in 293 cell...