

## Product Datasheet

### SLC1A7 Antibody (orb1238954)

## Description

SLC1A7 Antibody

### Species/Host

Rabbit

### Reactivity

Human, Mouse

### Conjugation

Unconjugated

### Tested

ELISA, IF, IHC-P, WB

### Applications

### Immunogen

SLC1A7 antibody was raised against a 14 amino acid peptide near the carboxy terminus of human SLC1A7. The immunogen is located within amino acids 460 - 510 of SLC1A7.

### Target

SLC1A7

### Preservatives

SLC1A7 antibody is supplied in PBS containing 0.02% sodium azide.

### Form/Appearance

Liquid

### Concentration

1 mg/mL

### Storage

SLC1A7 antibody can be stored at 4°C for three months and -20°C, stable for up to one year.

### Note

For research use only

### Application notes

SLC1A7 antibody can be used for detection of SLC1A7 by Western blot at 1 - 2 µg/ml. Antibody can also be used for immunohistochemistry starting at 5 µg/mL. For immunofluorescence start at 20 µg/mL. Antibody validated: Western Blot in mouse samples; Immunohistochemistry in mouse samples and Immunofluorescence in mouse samples. All other applications and species not yet tested.

### Isotype

IgG

### Clonality

Polyclonal

### MW

Predicted: 17, 52, 62, 68 kDa Observed: 52 kDa

### Uniprot ID

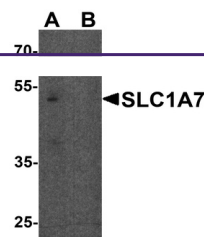
[O00341](#)

### NCBI

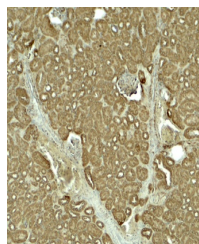
[NP\\_001274524](#)

### Dilution Range

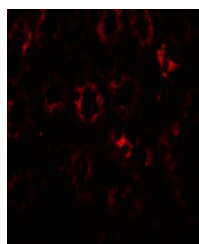
SLC1A7 antibody can be used for detection of SLC1A7 by Western blot at 1 - 2 µg/ml. Antibody can also be used for immunohistochemistry starting at 5 µg/mL. For immunofluorescence start at 20 µg/mL. Antibody validated: Western Blot in mouse samples; Immunohistochemistry in mouse samples and Immunofluorescence in mouse samples. All other applications and species not yet tested.



Western blot analysis of SLC1A7 in C2C12...



Immunohistochemistry of SLC1A7 in mouse ...



Immunofluorescence of SLC1A7 in mouse ki...