

## Product Datasheet

### SLC27A6 Antibody (orb1238952)

**Description**
**SLC27A6 Antibody**
**Species/Host**

Rabbit

**Reactivity**

Human, Mouse, Rat

**Conjugation**

Unconjugated

**Tested**

ELISA, IF, IHC, WB

**Applications**
**Immunogen**

SLC27A6 antibody was raised against a 16 amino acid peptide near the amino terminus of human SLC27A6. The immunogen is located within amino acids 180 - 230 of SLC27A6.

**Target**

SLC27A6

**Preservatives**

SLC27A6 Antibody is supplied in PBS containing 0.02% sodium azide.

**Form/Appearance**

Liquid

**Concentration**

1 mg/mL

**Storage**

SLC27A6 antibody can be stored at 4°C for three months and -20°C, stable for up to one year.

**Note**

For research use only

**Application notes**

SLC27A6 antibody can be used for detection of SLC27A6 by Western blot at 1 - 2 µg/mL. Antibody can also be used for Immunohistochemistry starting at 5 µg/mL. For immunofluorescence start at 20 µg/mL. Antibody validated: Western Blot in mouse samples; Immunocytochemistry in rat samples and Immunofluorescence in rat samples. All other applications and species not yet tested.

**Isotype**

IgG

**Clonality**

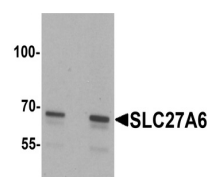
Polyclonal

**MW**

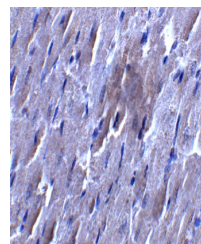
Predicted: 68 kDa Observed: 68 kDa

**Uniprot ID**
[Q9Y2P4](#)
**NCBI**
[NP\\_054750](#)
**Dilution Range**

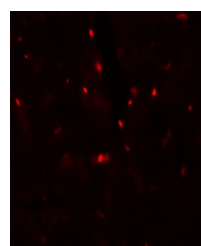
SLC27A6 antibody can be used for detection of SLC27A6 by Western blot at 1 - 2 µg/mL. Antibody can also be used for Immunohistochemistry starting at 5 µg/mL. For immunofluorescence start at 20 µg/mL. Antibody validated: Western Blot in mouse samples; Immunocytochemistry in rat samples and Immunofluorescence in rat samples. All other applications and species not yet tested.

**A B**


Western blot analysis of SLC27A6 in A20 ...



Immunocytochemistry of SLC27A6 in rat heart...



Immunofluorescence of SLC27A6 in rat heart...