

Product Datasheet

SLC29A4 Antibody (orb1238948)

Description

SLC29A4 Antibody

Species/Host

Rabbit

Reactivity

Human

Conjugation

Unconjugated

Tested Applications

ELISA, IF, IHC-P, WB

Immunogen

SLC29A4 antibody was raised against an 18 amino acid peptide near the center of human SLC29A4. The immunogen is located within amino acids 310 - 360 of SLC29A4.

Target

SLC29A4

Preservatives

SLC29A4 antibody is supplied in PBS containing 0.02% sodium azide.

Form/Appearance

Liquid

Concentration

1 mg/mL

Storage

SLC29A4 antibody can be stored at 4°C for three months and -20°C, stable for up to one year.

Note

For research use only

Application notes

SLC29A4 antibody can be used for detection of SLC29A4 by Western blot at 1 - 2 µg/mL. Antibody can also be used for immunohistochemistry starting at 5 µg/mL. For immunofluorescence start at 20 µg/mL. Antibody validated: Western Blot in human samples; Immunohistochemistry in human samples and Immunofluorescence in human samples. All other applications and species not yet tested.

Isotype

IgG

Clonality

Polyclonal

MW

Predicted: 58 kDa Observed: 58 kDa

Uniprot ID

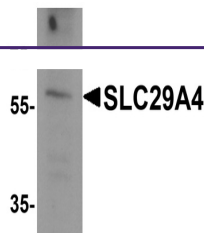
[Q7RTT9](#)

NCBI

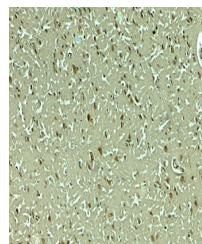
[NP_001035751](#)

Dilution Range

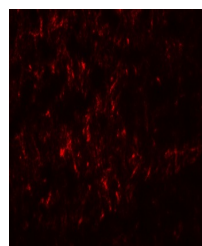
SLC29A4 antibody can be used for detection of SLC29A4 by Western blot at 1 - 2 µg/mL. Antibody can also be used for immunohistochemistry starting at 5 µg/mL. For immunofluorescence start at 20 µg/mL. Antibody validated: Western Blot in human samples; Immunohistochemistry in human samples and Immunofluorescence in human samples. All other applications and species not yet tested.



Western blot analysis of SLC29A4 in SK-N-BE cells.



Immunohistochemistry of SLC29A4 in human tissue.



Immunofluorescence of SLC29A4 in human tissue.