

Product Datasheet

GP6 Antibody (orb1238920)

Description

GP6 Antibody

Species/Host

Rabbit

Reactivity

Human, Mouse, Rat

Conjugation

Unconjugated

Tested

ELISA, IF, IHC-P, WB

Applications

Immunogen

GPVI antibody was raised against a 15 amino acid synthetic peptide near the carboxy terminus of isoform 2 of the human GPVI. The immunogen is located within the last 50 amino acids of GPVI.

Target

GP6

Preservatives

GPVI Antibody is supplied in PBS containing 0.02% sodium azide.

Form/Appearance

Liquid

Concentration

1 mg/mL

Storage

GPVI antibody can be stored at 4°C for three months and -20°C, stable for up to one year. As with all antibodies care should be taken to avoid repeated freeze thaw cycles. Antibodies should not be exposed to prolonged high temperatures.

Note

For research use only

Application notes

GPVI antibody can be used for detection of GPVI by Western blot at 1 µg/mL. Antibody can also be used for immunohistochemistry starting at 10 µg/mL. For immunofluorescence start at 20 µg/mL. Antibody validated: Western Blot in mouse samples; Immunohistochemistry in human samples and Immunofluorescence in human samples. All other applications and species not yet tested.

Isotype

IgG

Clonality

Polyclonal

MW

Predicted: 68 kDa Observed: 67 kDa

Uniprot ID

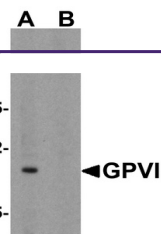
[Q9HCN6](#)

NCBI

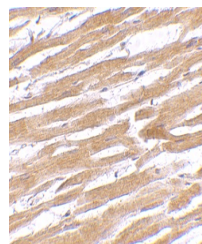
[NP_057447](#)

Dilution Range

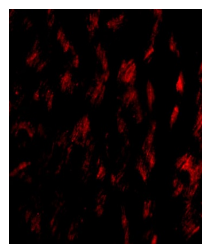
GPVI antibody can be used for detection of GPVI by Western blot at 1 µg/mL. Antibody can also be used for immunohistochemistry starting at 10 µg/mL. For immunofluorescence start at 20 µg/mL. Antibody validated: Western Blot in mouse samples;



Western blot analysis of GPVI in K562 ce...



Immunohistochemistry of GPVI in human he...



Immunofluorescence of GPVI in Human Hear...