

Product Datasheet

BAG4 Antibody (orb1238917)

Description
BAG4 Antibody
Species/Host

Rabbit

Reactivity

Human, Mouse, Rat

Conjugation

Unconjugated

Tested

ELISA, ICC, IF, WB

Applications
Immunogen

SODD antibody was raised against a peptide corresponding to amino acids near the amino terminus of human SODD. The immunogen is located within the first 50 amino acids of SODD.

Target

BAG4

Preservatives

SODD Antibody is supplied in PBS containing 0.02% sodium azide.

Form/Appearance

Liquid

Concentration

1 mg/ml

Storage

SODD antibody can be stored at 4°C for three months and -20°C, stable for up to one year. As with all antibodies care should be taken to avoid repeated freeze thaw cycles. Antibodies should not be exposed to prolonged high temperatures.

Note

For research use only

Application notes

SODD antibody can be used for detection of SODD by Western blot at 0.5 µg/mL. An approximately 60 kDa band can be detected. Antibody can also be used for immunocytochemistry starting at 5 µg/mL. For immunofluorescence start at 20 µg/mL. Antibody validated: Western Blot in human samples; Immunocytochemistry in human samples and Immunofluorescence in human samples. All other applications and species not yet tested.

Isotype

IgG

Clonality

Polyclonal

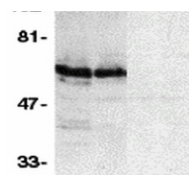
MW

60 kDa

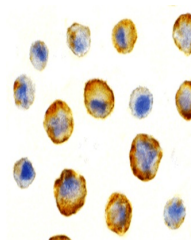
Uniprot ID
O95429
NCBI
AF111116
Dilution Range

SODD antibody can be used for detection of SODD by Western blot at 0.5 µg/mL. An approximately 60 kDa band can be detected. Antibody can also be used for immunocytochemistry starting at 5 µg/mL. For

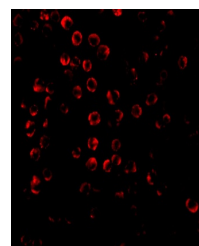
1 2 3 4



Western blot analysis of SODD in HeLa (1...



Immunocytochemistry of SODD in HeLa cell...



Immunofluorescence of SODD in HeLa cells...

Biorbyt Ltd.

7 Signet Court, Swann's Road, Cambridge, CB5 8LA, United Kingdom

Email: info@biorbyt.com | Phone: +44 (0) 1223 859-353 | Fax: +44 (0)1223 280 240

Biorbyt LLC.

68 TW Alexander Drive
Research Triangle Park
Durham, North Carolina
27709, United States

Email: info@biorbyt.com | Phone: +1 (415) 906-5211 | Fax: +1 (415) 651-8558

Expiration Date

12 months from date of receipt.