

Product Datasheet

SPATA1 Antibody (orb1238911)

Description

SPATA1 Antibody

Species/Host

Rabbit

Reactivity

Human, Mouse

Conjugation

Unconjugated

Tested

ELISA, IF, IHC-P, WB

Applications

Immunogen

SPATA1 antibody was raised against an 18 amino acid synthetic peptide near the carboxy terminus of human SPATA1. The immunogen is located within amino acids 300 - 350 of SPATA1.

Target

SPATA1

Preservatives

SPATA1 Antibody is supplied in PBS containing 0.02% sodium azide.

Form/Appearance

Liquid

Concentration

1 mg/mL

Storage

SPATA1 antibody can be stored at 4°C for three months and -20°C, stable for up to one year. As with all antibodies care should be taken to avoid repeated freeze thaw cycles. Antibodies should not be exposed to prolonged high temperatures.

Note

For research use only

Application notes

SPATA1 antibody can be used for detection of SPATA1 by Western blot at 1 - 2 µg/mL. Antibody can also be used for immunohistochemistry starting at 2.5 µg/mL. For immunofluorescence start at 20 µg/mL. Antibody validated: Western Blot in mouse samples; Immunohistochemistry in mouse samples and Immunofluorescence in mouse samples. All other applications and species not yet tested.

Isotype

IgG

Clonality

Polyclonal

Uniprot ID

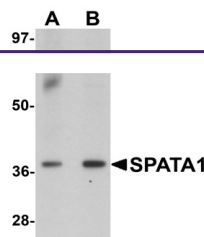
[Q5VX52](#)

NCBI

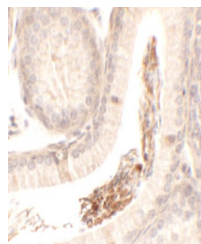
[Q5VX52](#)

Dilution Range

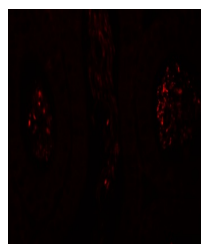
SPATA1 antibody can be used for detection of SPATA1 by Western blot at 1 - 2 µg/mL. Antibody can also be used for immunohistochemistry starting at 2.5 µg/mL. For immunofluorescence start at 20 µg/mL. Antibody validated: Western Blot in mouse samples; Immunohistochemistry in mouse samples



Western blot analysis of SPATA1 in A20 c...



Immunohistochemistry of SPATA1 in mouse ...



Immunofluorescence of SPATA1 in mouse te...