

Product Datasheet

SPATA3 Antibody (orb1238910)

Description

SPATA3 Antibody

Species/Host

Rabbit

Reactivity

Human, Mouse

Conjugation

Unconjugated

Tested

ELISA, IF, IHC-P, WB

Applications

Immunogen

SPATA3 antibody was raised against a 17 amino acid synthetic peptide near the carboxy terminus of human SPATA3. The immunogen is located within the last 50 amino acids of SPATA3.

Target

SPATA3

Preservatives

SPATA3 Antibody is supplied in PBS containing 0.02% sodium azide.

Form/Appearance

Liquid

Concentration

1 mg/mL

Storage

SPATA3 antibody can be stored at 4°C for three months and -20°C, stable for up to one year. As with all antibodies care should be taken to avoid repeated freeze thaw cycles. Antibodies should not be exposed to prolonged high temperatures.

Note

For research use only

Application notes

SPATA3 antibody can be used for detection of SPATA3 by Western blot at 1 - 2 µg/mL. Antibody can also be used for immunohistochemistry starting at 2.5 µg/mL. For immunofluorescence start at 20 µg/mL. Antibody validated: Western Blot in mouse samples; Immunohistochemistry in mouse samples and Immunofluorescence in mouse samples. All other applications and species not yet tested.

Isotype

IgG

Clonality

Polyclonal

MW

Predicted: 21 kDa Observed: 26 kDa

Uniprot ID

[Q8NHX4](#)

NCBI

[NP_620712](#)

Dilution Range

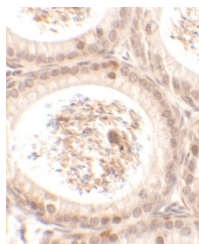
SPATA3 antibody can be used for detection of SPATA3 by Western blot at 1 - 2 µg/mL. Antibody can also be used for immunohistochemistry starting at 2.5 µg/mL. For immunofluorescence start at 20 µg/mL. Antibody validated: Western Blot in mouse

42-

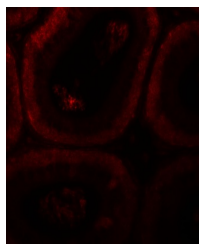
17-

10-

Western blot analysis of SPATA3 in 3T3 c...



Immunohistochemistry of SPATA3 in mouse ...



Immunofluorescence of SPATA3 in mouse te...