

Product Datasheet

SPATA4 Antibody (orb1238909)

Description

SPATA4 Antibody

Species/Host

Rabbit

Reactivity

Human, Mouse

Conjugation

Unconjugated

Tested

ELISA, IF, IHC-P, WB

Applications

Immunogen

SPATA4 antibody was raised against an 18 amino acid synthetic peptide near the carboxy terminus of human SPATA4. The immunogen is located within amino acids 200 - 250 of SPATA4.

Target

SPATA4

Preservatives

SPATA4 Antibody is supplied in PBS containing 0.02% sodium azide.

Form/Appearance

Liquid

Concentration

1 mg/mL

Storage

SPATA4 antibody can be stored at 4°C for three months and -20°C, stable for up to one year. As with all antibodies care should be taken to avoid repeated freeze thaw cycles. Antibodies should not be exposed to prolonged high temperatures.

Note

For research use only

Application notes

SPATA4 antibody can be used for detection of SPATA4 by Western blot at 1 - 2 µg/mL. Antibody can also be used for immunohistochemistry starting at 2.5 µg/mL. For immunofluorescence start at 20 µg/mL. Antibody validated: Western Blot in mouse samples; Immunohistochemistry in mouse samples and Immunofluorescence in mouse samples. All other applications and species not yet tested.

Isotype

IgG

Clonality

Polyclonal

Uniprot ID

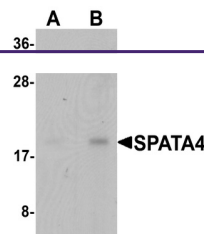
[Q8NEY3](#)

NCBI

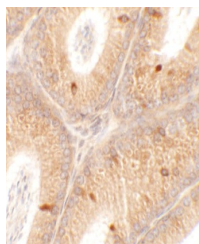
[NP_653245](#)

Dilution Range

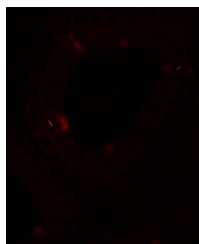
SPATA4 antibody can be used for detection of SPATA4 by Western blot at 1 - 2 µg/mL. Antibody can also be used for immunohistochemistry starting at 2.5 µg/mL. For immunofluorescence start at 20 µg/mL. Antibody validated: Western Blot in mouse samples; Immunohistochemistry in mouse samples



Western blot analysis of SPATA4 in mouse...



Immunohistochemistry of SPATA4 in mouse ...



Immunofluorescence of SPATA4 in mouse te...