

Product Datasheet

ZFYVE26 Antibody (orb1238906)

Description

ZFYVE26 Antibody

Species/Host

Rabbit

Reactivity

Human, Mouse, Rat

Conjugation

Unconjugated

Tested

ELISA, IF, WB

Applications

Immunogen

SPG15 antibody was raised against a 16 amino acid synthetic peptide near the carboxy terminus of human SPG15. The immunogen is located within amino acids 1710 - 1760 of SPG15.

Target

ZFYVE26

Preservatives

SPG15 Antibody is supplied in PBS containing 0.02% sodium azide.

Form/Appearance

Liquid

Concentration

1 mg/mL

Storage

SPG15 antibody can be stored at 4°C for three months and -20°C, stable for up to one year. As with all antibodies care should be taken to avoid repeated freeze thaw cycles. Antibodies should not be exposed to prolonged high temperatures.

Note

For research use only

Application notes

SPG15 antibody can be used for detection of SPG15 by Western blot at 1 - 2 µg/mL. For immunofluorescence start at 20 µg/mL. Antibody validated: Western Blot in human samples and Immunofluorescence in mouse samples. All other applications and species not yet tested.

Isotype

IgG

Clonality

Polyclonal

MW

Predicted: 280 kDa Observed: 260 kDa

Uniprot ID

[Q68DK2](#)

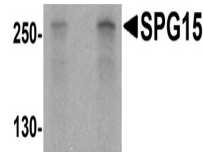
NCBI

[EAW80952](#)

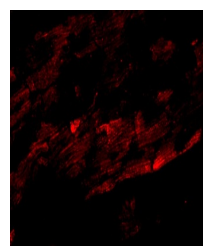
Dilution Range

SPG15 antibody can be used for detection of SPG15 by Western blot at 1 - 2 µg/mL. For immunofluorescence start at 20 µg/mL. Antibody validated: Western Blot in human samples and Immunofluorescence in mouse samples. All other applications and species not yet tested.

A B



Western blot analysis of SPG15 in K562 c...



Immunofluorescence of SPG15 in Mouse Hea...