

Product Datasheet

IL21R Antibody (orb1238905)

Description

IL21R Antibody

Species/Host

Rabbit

Reactivity

Human, Mouse, Rat

Conjugation

Unconjugated

Tested

ELISA, IF, IHC-P, WB

Applications

Immunogen

IL-21 receptor antibody was raised against a synthetic peptide corresponding to amino acids 97 to 111 of human IL-21 receptor precursor. The immunogen is located within amino acids 80 - 130 of IL-21 Receptor.

Target

IL21R

Preservatives

IL-21 Receptor Antibody is supplied in PBS containing 0.02% sodium azide.

Form/Appearance

Liquid

Concentration

1 mg/ml

Storage

IL-21 Receptor antibody can be stored at 4°C for three months and -20°C, stable for up to one year. As with all antibodies care should be taken to avoid repeated freeze thaw cycles. Antibodies should not be exposed to prolonged high temperatures.

Note

For research use only

Application notes

IL-21 receptor antibody can be used for detection of IL-21 receptor by Western blot at 1-2 µg/mL. An approximately 60 kDa band can be detected. Antibody can also be used for immunohistochemistry starting at 10 µg/mL. For immunofluorescence start at 20 µg/mL. Antibody validated: Western Blot in human samples; Immunohistochemistry in rat samples and Immunofluorescence in human and rat samples. All other applications and species not yet tested.

Isotype

IgG

Clonality

Polyclonal

MW

Predicted: 60 kDa Observed: 62 kDa

Uniprot ID

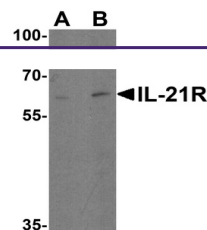
[Q9HBE5](#)

NCBI

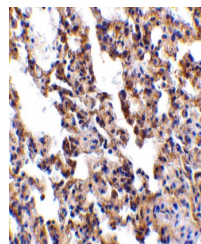
[NP_068570](#)

Dilution Range

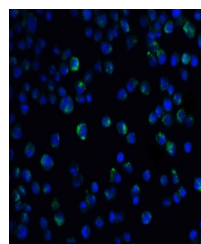
IL-21 receptor antibody can be used for detection of IL-21 receptor by Western blot at 1-2 µg/mL. An



Western blot analysis of IL-21 receptor ...



Immunohistochemistry of IL-21 receptor i...



Immunofluorescence of IL-21 Receptor in ...