

## Product Datasheet

### SPINK2 Antibody (orb1238904)

## Description

## SPINK2 Antibody

### Species/Host

Rabbit

### Reactivity

Human, Mouse

### Conjugation

Unconjugated

### Tested

ELISA, IF, IHC-P, WB

### Applications

### Immunogen

SPINK2 antibody was raised against a 16 amino acid synthetic peptide near the carboxy terminus of mouse SPINK2. The immunogen is located within the last 50 amino acids of SPINK2.

### Target

SPINK2

### Preservatives

SPINK2 Antibody is supplied in PBS containing 0.02% sodium azide.

### Form/Appearance

Liquid

### Concentration

1 mg/mL

### Storage

SPINK2 antibody can be stored at 4°C for three months and -20°C, stable for up to one year. As with all antibodies care should be taken to avoid repeated freeze thaw cycles. Antibodies should not be exposed to prolonged high temperatures.

### Note

For research use only

### Application notes

SPINK2 antibody can be used for detection of SPINK2 by Western blot at 1 µg/mL. Antibody can also be used for immunohistochemistry starting at 2.5 µg/mL. For immunofluorescence start at 20 µg/mL. Antibody validated: Western Blot in human samples; Immunohistochemistry in mouse samples and Immunofluorescence in mouse samples. All other applications and species not yet tested.

### Isotype

IgG

### Clonality

Polyclonal

### MW

Predicted: 15 kDa Observed: 18 kDa

### Uniprot ID

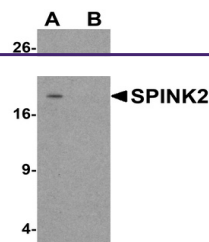
[Q8BMY7](#)

### NCBI

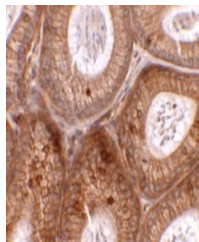
[NP\\_001276693.1](#)

### Dilution Range

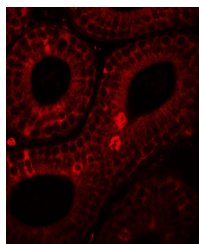
SPINK2 antibody can be used for detection of SPINK2 by Western blot at 1 µg/mL. Antibody can also be used for immunohistochemistry starting at 2.5 µg/mL. For immunofluorescence start at 20 µg/mL. Antibody validated: Western Blot in human



Western blot analysis of SPINK2 in human...



Immunohistochemistry of SPINK2 in mouse ...



Immunofluorescence of SPINK2 in mouse te...