

Product Datasheet

SPNS1 Antibody (orb1238903)

Description

SPNS1 Antibody

Species/Host

Rabbit

Reactivity

Human

Conjugation

Unconjugated

Tested

ELISA, IF, IHC-P, WB

Applications

Immunogen

SPINSTER antibody was raised against an 18 amino acid peptide near the amino terminus of human SPINSTER. The immunogen is located within the first 50 amino acids of SPINSTER.

Target

SPNS1

Preservatives

SPINSTER antibody is supplied in PBS containing 0.02% sodium azide.

Form/Appearance

Liquid

Concentration

1 mg/mL

Storage

SPINSTER antibody can be stored at 4°C for three months and -20°C, stable for up to one year.

Note

For research use only

Application notes

SPINSTER antibody can be used for detection of SPINSTER by Western blot at 1 - 2 µg/ml. Antibody can also be used for immunohistochemistry starting at 2.5 µg/mL. For immunofluorescence start at 20 µg/mL. Antibody validated: Western Blot in human samples; Immunohistochemistry in human samples and Immunofluorescence in human samples. All other applications and species not yet tested.

Isotype

IgG

Clonality

Polyclonal

MW

Predicted: 58 kDa Observed: 56 kDa

Uniprot ID

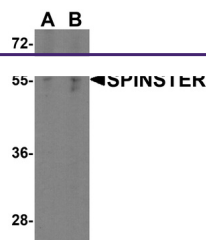
[Q9H2V7](#)

NCBI

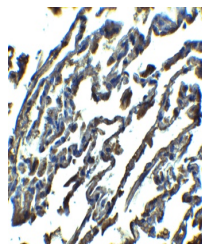
[NP_001135920](#)

Dilution Range

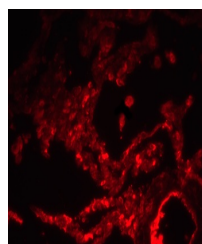
SPINSTER antibody can be used for detection of SPINSTER by Western blot at 1 - 2 µg/ml. Antibody can also be used for immunohistochemistry starting at 2.5 µg/mL. For immunofluorescence start at 20 µg/mL. Antibody validated: Western Blot in human samples; Immunohistochemistry in human samples and Immunofluorescence in human samples. All other applications and species not yet tested.



Western blot analysis of SPINSTER in Hep...



Immunohistochemistry of SPINSTER in huma...



Immunofluorescence of SPINSTER in human ...