

Product Datasheet

SPRED3 Antibody (orb1238899)

Description

SPRED3 Antibody

Species/Host

Rabbit

Reactivity

Human

Conjugation

Unconjugated

Tested

ELISA, IF, IHC-P, WB

Applications

Immunogen

Spred3 antibody was raised against a 16 amino acid synthetic peptide near the center of the human Spred3. The immunogen is located within amino acids 140 - 190 of Spred3.

Target

SPRED3

Preservatives

Spred3 Antibody is supplied in PBS containing 0.02% sodium azide.

Form/Appearance

Liquid

Concentration

1 mg/mL

Storage

Spred3 antibody can be stored at 4°C for three months and -20°C, stable for up to one year. As with all antibodies care should be taken to avoid repeated freeze thaw cycles. Antibodies should not be exposed to prolonged high temperatures.

Note

For research use only

Application notes

Spred3 antibody can be used for detection of Spred3 by Western blot at 2 - 4 µg/mL. Antibody can also be used for immunohistochemistry starting at 2.5 µg/mL. For immunofluorescence start at 20 µg/mL. Antibody validated: Western Blot in mouse samples; Immunohistochemistry in human samples and Immunofluorescence in human samples. All other applications and species not yet tested.

Isotype

IgG

Clonality

Polyclonal

MW

Predicted: 45 kDa Observed: 45 kDa

Uniprot ID

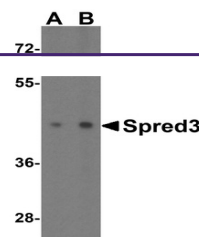
[Q2MJR0](#)

NCBI

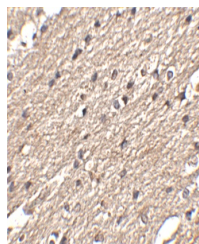
[NP_001035987](#)

Dilution Range

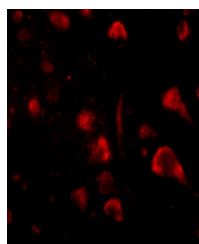
Spred3 antibody can be used for detection of Spred3 by Western blot at 2 - 4 µg/mL. Antibody can also be used for immunohistochemistry starting at 2.5 µg/mL. For immunofluorescence start at 20 µg/mL. Antibody validated: Western Blot in mouse



Western blot analysis of Spred3 in mouse...



Immunohistochemistry of Spred3 in human ...



Immunofluorescence of spred3 in human br...