

Product Datasheet

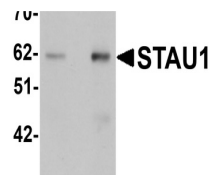
STAU1 Antibody (orb1238880)

Description

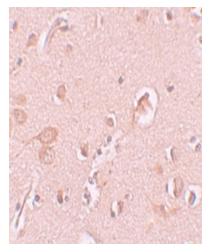
STAU1 Antibody

Species/Host	Rabbit
Reactivity	Human, Mouse, Rat
Conjugation	Unconjugated
Tested Applications	ELISA, IF, IHC-P, WB
Immunogen	STAU1 antibody was raised against a 15 amino acid synthetic peptide near the carboxy terminus of human STAU1. The immunogen is located within the last 50 amino acids of STAU1.
Target	STAU1
Preservatives	STAU1 Antibody is supplied in PBS containing 0.02% sodium azide.
Form/Appearance	Liquid
Concentration	1 mg/mL
Storage	STAU1 antibody can be stored at 4°C for three months and -20°C, stable for up to one year. As with all antibodies care should be taken to avoid repeated freeze thaw cycles. Antibodies should not be exposed to prolonged high temperatures.
Note	For research use only
Application notes	STAU1 antibody can be used for detection of STAU1 by Western blot at 1 - 2 µg/mL. Antibody can also be used for immunohistochemistry starting at 10 µg/mL. For immunofluorescence start at 20 µg/mL. Antibody validated: Western Blot in rat samples; Immunohistochemistry in human samples and Immunofluorescence in human samples. All other applications and species not yet tested.
Isotype	IgG
Clonality	Polyclonal
Uniprot ID	O95793
NCBI	NP_059347
Dilution Range	STAU1 antibody can be used for detection of STAU1 by Western blot at 1 - 2 µg/mL. Antibody can also be used for immunohistochemistry starting at 10 µg/mL. For immunofluorescence start at 20 µg/mL. Antibody validated: Western Blot in rat samples; Immunohistochemistry in human samples and

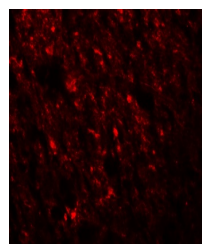
A B



Western blot analysis of STAU1 in rat br...



Immunohistochemistry of STAU1 in human b...



Immunofluorescence of STAU1 in Human Bra...