

Product Datasheet

STEAP1 Antibody (orb1238878)

Description

STEAP1 Antibody

Species/Host

Rabbit

Reactivity

Human, Mouse, Rat

Conjugation

Unconjugated

Tested

ELISA, IF, IHC-P, WB

Applications

Immunogen

STEAP1 antibody was raised against a 16 amino acid synthetic peptide from near the center of human STEAP1. The immunogen is located within amino acids 130 - 180 of STEAP1.

Target

STEAP1

Preservatives

STEAP1 Antibody is supplied in PBS containing 0.02% sodium azide.

Form/Appearance

Liquid

Concentration

1 mg/mL

Storage

STEAP1 antibody can be stored at 4°C for three months and -20°C, stable for up to one year. As with all antibodies care should be taken to avoid repeated freeze thaw cycles. Antibodies should not be exposed to prolonged high temperatures.

Note

For research use only

Application notes

STEAP1 antibody can be used for detection of STEAP1 by Western blot at 1 - 2 µg/mL. Antibody can also be used for immunohistochemistry starting at 2.5 µg/mL. For immunofluorescence start at 20 µg/mL. betterAntibody validated: Western Blot in human samples; Immunohistochemistry in human samples and Immunofluorescence in human samples. All other applications and species not yet tested.

Isotype

IgG

Clonality

Polyclonal

Uniprot ID

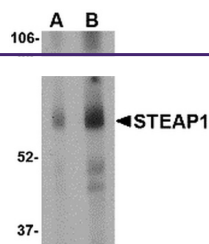
[Q9UHE8](#)

NCBI

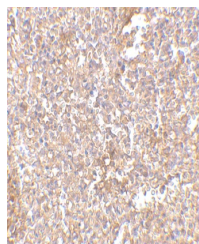
[EAL24166](#)

Dilution Range

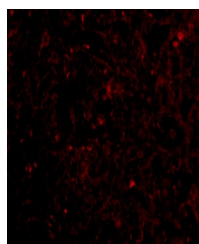
STEAP1 antibody can be used for detection of STEAP1 by Western blot at 1 - 2 µg/mL. Antibody can also be used for immunohistochemistry starting at 2.5 µg/mL. For immunofluorescence start at 20 µg/mL. betterAntibody validated: Western Blot in



Western blot analysis of STEAP1 in human...



Immunohistochemistry of STEAP1 in human ...



Immunofluorescence of STEAP1 in human sp...