

Product Datasheet

STEAP2 Antibody (orb1238877)

Description

STEAP2 Antibody

Species/Host

Rabbit

Reactivity

Human, Mouse

Conjugation

Unconjugated

Tested

ELISA, IF, IHC-P, WB

Applications

Immunogen

STEAP2 antibody was raised against a 16 amino acid synthetic peptide from near the carboxy terminus of human STEAP2. The immunogen is located within the last 50 amino acids of STEAP2.

Target

STEAP2

Preservatives

STEAP2 Antibody is supplied in PBS containing 0.02% sodium azide.

Form/Appearance

Liquid

Concentration

1 mg/mL

Storage

STEAP2 antibody can be stored at 4°C for three months and -20°C, stable for up to one year. As with all antibodies care should be taken to avoid repeated freeze thaw cycles. Antibodies should not be exposed to prolonged high temperatures.

Note

For research use only

Application notes

STEAP2 antibody can be used for detection of STEAP2 by Western blot at 1 - 2 µg/mL. Antibody can also be used for immunohistochemistry starting at 2.5 µg/mL. For immunofluorescence start at 20 µg/mL. Antibody validated: Western Blot in human samples; Immunohistochemistry in human samples and Immunofluorescence in human samples. All other applications and species not yet tested.

Isotype

IgG

Clonality

Polyclonal

MW

Predicted: 54 kDa Observed: 55 kDa

Uniprot ID

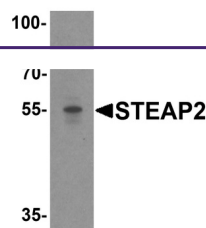
[Q8NFT2](#)

NCBI

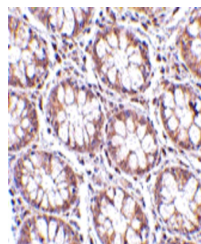
[Q8NFT2](#)

Dilution Range

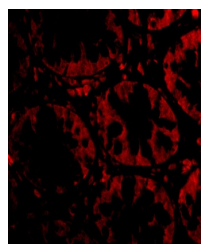
STEAP2 antibody can be used for detection of STEAP2 by Western blot at 1 - 2 µg/mL. Antibody can also be used for immunohistochemistry starting at 2.5 µg/mL. For immunofluorescence start at 20 µg/mL. Antibody validated: Western Blot in human



Western blot analysis of STEAP2 in human...



Immunohistochemistry of STEAP2 in human ...



Immunofluorescence of STEAP2 in Human Co...