

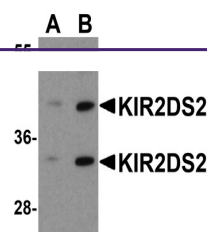
Product Datasheet

KIR2DS2 Antibody (orb1238875)

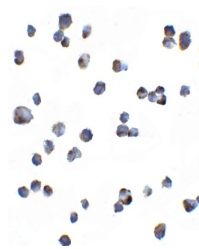
Description

KIR2DS2 Antibody

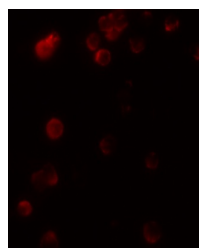
Species/Host	Rabbit
Reactivity	Human
Conjugation	Unconjugated
Tested Applications	ELISA, ICC, IF, WB
Immunogen	KIR2DS2 antibody was raised against an 18 amino acid peptide near the carboxy terminus of human KIR2DS2. The immunogen is located within the last 50 amino acids of KIR2DS2.
Target	KIR2DS2
Preservatives	KIR2DS2 antibody is supplied in PBS containing 0.02% sodium azide.
Form/Appearance	Liquid
Concentration	1 mg/mL
Storage	KIR2DS2 antibody can be stored at 4°C for three months and -20°C, stable for up to one year.
Note	For research use only
Application notes	KIR2DS2 antibody can be used for detection of KIR2DS2 by Western blot at 1 - 2 µg/ml. For immunofluorescence start at 20 µg/mL. Antibody validated: Western Blot in human samples; Immunocytochemistry in human samples and Immunofluorescence in human samples. All other applications and species not yet tested.
Isotype	IgG
Clonality	Polyclonal
MW	Predicted: 28, 33, 37 kDa Observed: 34, 42 kDa
Uniprot ID	P43631
NCBI	NP_036444
Dilution Range	KIR2DS2 antibody can be used for detection of KIR2DS2 by Western blot at 1 - 2 µg/ml. For immunofluorescence start at 20 µg/mL. Antibody validated: Western Blot in human samples; Immunocytochemistry in human samples and Immunofluorescence in human samples. All other applications and species not yet tested.
Expiration Date	12 months from date of receipt.



Western blot analysis of KIR2DS2 in 293 ...



Immunocytochemistry of KIR2DS2 in Hek293...



Immunofluorescence of KIR2DS2 in 293 cel...