

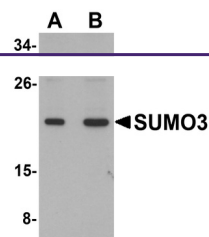
Product Datasheet

SUMO3 Antibody (orb1238866)

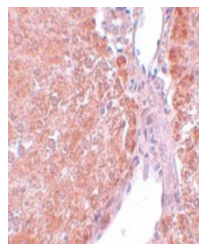
Description

SUMO3 Antibody

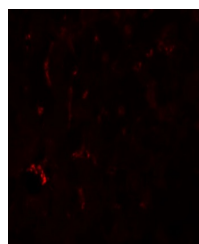
Species/Host	Rabbit
Reactivity	Human, Mouse, Rat
Conjugation	Unconjugated
Tested Applications	ELISA, IF, IHC-P, WB
Immunogen	SUMO3 antibody was raised against a 13 amino acid synthetic peptide near the carboxy terminus of human SUMO3. The immunogen is located within the last 50 amino acids of SUMO3.
Target	SUMO3
Preservatives	SUMO3 Antibody is supplied in PBS containing 0.02% sodium azide.
Form/Appearance	Liquid
Concentration	1 mg/mL
Storage	SUMO3 antibody can be stored at 4°C for three months and -20°C, stable for up to one year. As with all antibodies care should be taken to avoid repeated freeze thaw cycles. Antibodies should not be exposed to prolonged high temperatures.
Note	For research use only
Application notes	SUMO3 antibody can be used for detection of SUMO3 by Western blot at 1 - 2 µg/mL. Antibody can also be used for immunohistochemistry starting at 5 µg/mL. For immunofluorescence start at 20 µg/mL. Antibody validated: Western Blot in mouse samples; Immunohistochemistry in rat samples and Immunofluorescence in mouse samples. All other applications and species not yet tested.
Isotype	IgG
Clonality	Polyclonal
Uniprot ID	P55854
NCBI	NP_008867
Dilution Range	SUMO3 antibody can be used for detection of SUMO3 by Western blot at 1 - 2 µg/mL. Antibody can also be used for immunohistochemistry starting at 5 µg/mL. For immunofluorescence start at 20 µg/mL. Antibody validated: Western Blot in mouse samples; Immunohistochemistry in rat samples and



Western blot analysis of SUMO3 in mouse ...



Immunohistochemistry of SUMO2/3 in rat l...



Immunofluorescence of SUMO3 in mouse liv...