

Product Datasheet

SUSD3 Antibody (orb1238861)

Description

SUSD3 Antibody

Species/Host

Rabbit

Reactivity

Human, Mouse

Conjugation

Unconjugated

Tested

ELISA, ICC, WB

Applications

Immunogen

SUSD3 antibody was raised against a 16 amino acid peptide from near the center of human SUSD3. The immunogen is located within amino acids 120 - 170 of SUSD3.

Target

SUSD3

Preservatives

SUSD3 Antibody is supplied in PBS containing 0.02% sodium azide.

Form/Appearance

Liquid

Concentration

1 mg/mL

Storage

SUSD3 antibody can be stored at 4°C for three months and -20°C, stable for up to one year.

Note

For research use only

Application notes

SUSD3 antibody can be used for the detection of SUSD3 by Western blot at 1 - 2 µg/mL. Antibody can also be used for immunocytochemistry starting at 5 µg/mL. Antibody validated: Western Blot in human samples and Immunocytochemistry in mouse samples. All other applications and species not yet tested.

Isotype

IgG

Clonality

Polyclonal

MW

Predicted: 16, 22, 23, 28 kDa Observed: 23 kDa

Uniprot ID

[Q96L08](#)

NCBI

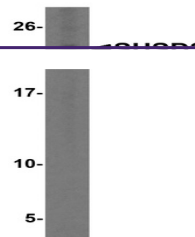
[NP_659443](#)

Dilution Range

SUSD3 antibody can be used for the detection of SUSD3 by Western blot at 1 - 2 µg/mL. Antibody can also be used for immunocytochemistry starting at 5 µg/mL. Antibody validated: Western Blot in human samples and Immunocytochemistry in mouse samples. All other applications and species not yet tested.

Expiration Date

12 months from date of receipt.



Western blot analysis of SUSD3 in HeLa cells.



Immunocytochemistry of SUSD3 in 3T3 cells.