

Product Datasheet

SYNPO2 Antibody (orb1238853)

Description

SYNPO2 Antibody

Species/Host

Rabbit

Reactivity

Human, Mouse

Conjugation

Unconjugated

Tested

ELISA, IF, IHC-P, WB

Applications
Immunogen

SYNPO2 antibody was raised against a 20 amino acid synthetic peptide near the amino terminus of human SYNPO2. The immunogen is located within amino acids 320 - 370 of SYNPO2.

Target

SYNPO2

Preservatives

SYNPO2 Antibody is supplied in PBS containing 0.02% sodium azide.

Form/Appearance

Liquid

Concentration

1 mg/mL

Storage

SYNPO2 antibody can be stored at 4°C for three months and -20°C, stable for up to one year. As with all antibodies care should be taken to avoid repeated freeze thaw cycles. Antibodies should not be exposed to prolonged high temperatures.

Note

For research use only

Application notes

SYNPO2 antibody can be used for detection of SYNPO2 by Western blot at 1 µg/mL. Antibody can also be used for immunohistochemistry starting at 5 µg/mL. For immunofluorescence start at 20 µg/mL. Antibody validated: Western Blot in human samples; Immunohistochemistry in mouse samples and Immunofluorescence in mouse samples. All other applications and species not yet tested.

Isotype

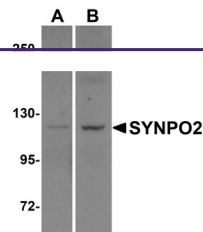
IgG

Clonality

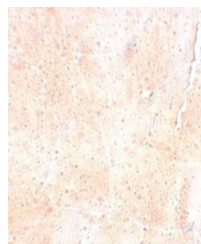
Polyclonal

Uniprot ID
[Q9UMS6](#)
NCBI
[NP_597734](#)
Dilution Range

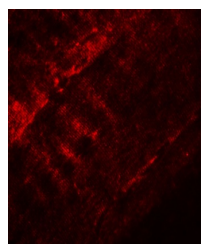
SYNPO2 antibody can be used for detection of SYNPO2 by Western blot at 1 µg/mL. Antibody can also be used for immunohistochemistry starting at 5 µg/mL. For immunofluorescence start at 20 µg/mL. Antibody validated: Western Blot in human samples; Immunohistochemistry in mouse samples



Western blot analysis of SYNPO2 in human...



Immunohistochemistry of SYNPO2 in mouse ...



Immunofluorescence of SYNPO2 in mouse sk...