

Product Datasheet

IL27RA Antibody (orb1238838)

Description

IL27RA Antibody

Species/Host

Rabbit

Reactivity

Human

Conjugation

Unconjugated

Tested

ELISA, IF, IHC-P, WB

Applications

Immunogen

TCCR antibody was raised against a synthetic peptide corresponding to amino acids near the carboxy terminus of human TCCR precursor. The sequence is identical to that of mouse TCCR. The immunogen is located within the last 50 amino acids of TCCR.

Target

IL27RA

Preservatives

TCCR Antibody is supplied in PBS containing 0.02% sodium azide.

Form/Appearance

Liquid

Concentration

1 mg/ml

Storage

TCCR antibody can be stored at 4°C for three months and -20°C, stable for up to one year. As with all antibodies care should be taken to avoid repeated freeze thaw cycles. Antibodies should not be exposed to prolonged high temperatures.

Note

For research use only

Application notes

TCCR antibody can be used for detection of TCCR by Western blot at 1 µg/mL. An approximately 70 kDa band can be detected. Antibody can also be used for immunohistochemistry starting at 5 µg/mL. For immunofluorescence start at 20 µg/mL. Antibody validated: Western Blot in human samples; Immunohistochemistry in human samples and Immunofluorescence in human samples. All other applications and species not yet tested.

Isotype

IgG

Clonality

Polyclonal

MW

70 kDa

Uniprot ID

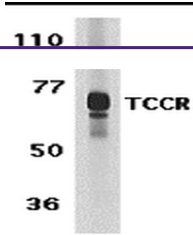
[Q6UWB1](#)

NCBI

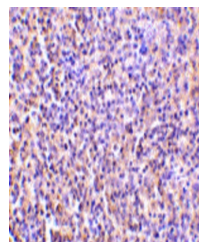
[NP_004834](#)

Dilution Range

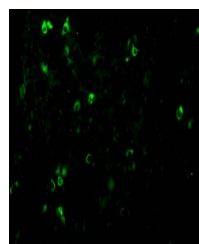
TCCR antibody can be used for detection of TCCR by Western blot at 1 µg/mL. An approximately 70 kDa



Western blot analysis of TCCR expression...



Immunohistochemistry of TCCR in human sp...



Immunofluorescence of TCCR in Human Sple...