

Product Datasheet

TCTEX1D1 Antibody (orb1238835)

Description

TCTEX1D1 Antibody

Species/Host

Rabbit

Reactivity

Human

Conjugation

Unconjugated

Tested

ELISA, IF, WB

Applications

Immunogen

TCTEX1D1 antibody was raised against a 16 amino acid synthetic peptide near the amino terminus of human. The immunogen is located within amino acids 30 - 80 of TCTEX1D1.

Target

TCTEX1D1

Preservatives

TCTEX1D1 Antibody is supplied in PBS containing 0.02% sodium azide.

Form/Appearance

Liquid

Concentration

1 mg/mL

Storage

TCTEX1D1 antibody can be stored at 4°C for three months and -20°C, stable for up to one year. As with all antibodies care should be taken to avoid repeated freeze thaw cycles. Antibodies should not be exposed to prolonged high temperatures.

Note

For research use only

Application notes

TCTEX1D1 antibody can be used for detection of TCTEX1D1 by Western blot at 1 µg/mL. For immunofluorescence start at 20 µg/mL. Antibody validated: Western Blot in human samples and Immunofluorescence in human samples. All other applications and species not yet tested.

Isotype

IgG

Clonality

Polyclonal

MW

20 kDa

Uniprot ID

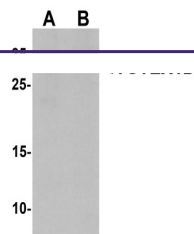
[Q8N7M0](#)

NCBI

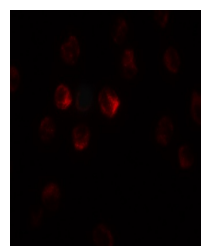
[NP_689878](#)

Dilution Range

TCTEX1D1 antibody can be used for detection of TCTEX1D1 by Western blot at 1 µg/mL. For immunofluorescence start at 20 µg/mL. Antibody validated: Western Blot in human samples and Immunofluorescence in human samples. All other applications and species not yet tested.



Western blot analysis of TCTEX1D1 in K562 cells.



Immunofluorescence of TCTEX1D1 in K562 cells.