

Product Datasheet

LRFN2 Antibody (orb1238825)

Description

LRFN2 Antibody

Species/Host

Rabbit

Reactivity

Human, Mouse, Rat

Conjugation

Unconjugated

Tested

ELISA, IF, IHC-P, WB

Applications

Immunogen

LRFN2 antibody was raised against a 14 amino acid synthetic peptide near the carboxy terminus of human LRFN2. The immunogen is located within amino acids 700 - 750 of LRFN2.

Target

LRFN2

Preservatives

LRFN2 Antibody is supplied in PBS containing 0.02% sodium azide.

Form/Appearance

Liquid

Concentration

1 mg/mL

Storage

LRFN2 antibody can be stored at 4°C for three months and -20°C, stable for up to one year. As with all antibodies care should be taken to avoid repeated freeze thaw cycles. Antibodies should not be exposed to prolonged high temperatures.

Note

For research use only

Application notes

LRFN2 antibody can be used for detection of LRFN2 by Western blot at 1 µg/mL. Antibody can also be used for immunohistochemistry starting at 2.5 µg/mL. For immunofluorescence start at 20 µg/mL. Antibody validated: Western Blot in mouse and rat samples; Immunohistochemistry in mouse samples and Immunofluorescence in mouse samples. All other applications and species not yet tested.

Isotype

IgG

Clonality

Polyclonal

MW

Predicted: 90 kDa Observed: 100 kDa

Uniprot ID

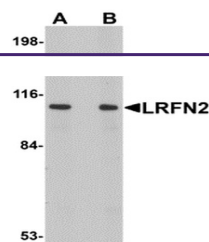
[Q9ULH4](#)

NCBI

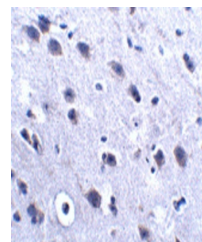
[Q9ULH4](#)

Dilution Range

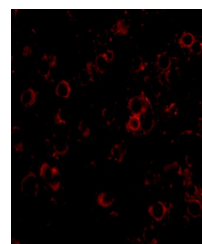
LRFN2 antibody can be used for detection of LRFN2 by Western blot at 1 µg/mL. Antibody can also be used for immunohistochemistry starting at 2.5 µg/mL. For immunofluorescence start at 20 µg/mL. Antibody validated: Western Blot in mouse



Western blot analysis of LRFN2 in rat br...



Immunohistochemistry of LRFN2 in mouse b...



Immunofluorescence of LRFN2 in mouse bra...