

Product Datasheet

RASD2 Antibody (orb1238824)

Description

RASD2 Antibody

Species/Host

Rabbit

Reactivity

Human, Mouse, Rat

Conjugation

Unconjugated

Tested

ELISA, IF, IHC-P, WB

Applications

Immunogen

TEM2 antibody was raised against a 15 amino acid synthetic peptide near the carboxy terminus of the human TEM2. The immunogen is located within the last 50 amino acids of TEM2.

Target

RASD2

Preservatives

TEM2 Antibody is supplied in PBS containing 0.02% sodium azide.

Form/Appearance

Liquid

Concentration

1 mg/mL

Storage

TEM2 antibody can be stored at 4°C for three months and -20°C, stable for up to one year. As with all antibodies care should be taken to avoid repeated freeze thaw cycles. Antibodies should not be exposed to prolonged high temperatures.

Note

For research use only

Application notes

TEM2 antibody can be used for detection of TEM2 by Western blot at 1 - 2 µg/mL. Antibody can also be used for immunohistochemistry starting at 2.5 µg/mL. For immunofluorescence start at 20 µg/mL. Antibody validated: Western Blot in human samples; Immunohistochemistry in human samples and Immunofluorescence in human samples. All other applications and species not yet tested.

Isotype

IgG

Clonality

Polyclonal

Uniprot ID

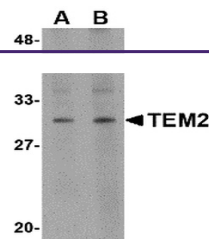
[Q96D21](#)

NCBI

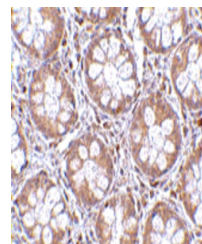
[Q96D21](#)

Dilution Range

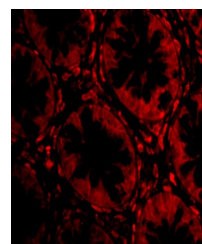
TEM2 antibody can be used for detection of TEM2 by Western blot at 1 - 2 µg/mL. Antibody can also be used for immunohistochemistry starting at 2.5 µg/mL. For immunofluorescence start at 20 µg/mL. Antibody validated: Western Blot in human samples; Immunohistochemistry in human samples



Western blot analysis of TEM2 in human c...



Immunohistochemistry of TEM2 in human co...



Immunofluorescence of TEM2 in Human Colo...