

## Product Datasheet

### TENM1 Antibody (orb1238817)

## Description

## TENM1 Antibody

### Species/Host

Rabbit

### Reactivity

Human, Mouse, Rat

### Conjugation

Unconjugated

### Tested

ELISA, IF, IHC-P, WB

### Applications

ELISA, IF, IHC-P, WB

### Immunogen

TENM1 antibody was raised against an 18 amino acid peptide near the amino terminus of human TENM1. The immunogen is located within the first 50 amino acids of TENM1.

### Target

TENM1

### Preservatives

TENM1 antibody is supplied in PBS containing 0.02% sodium azide.

### Form/Appearance

Liquid

### Concentration

1 mg/mL

### Storage

TENM1 antibody can be stored at 4°C for three months and -20°C, stable for up to one year.

### Note

For research use only

### Application notes

TENM1 antibody can be used for detection of TENM1 by Western blot at 1 - 2 µg/mL. Antibody can also be used for immunohistochemistry starting at 5 µg/mL. For immunofluorescence start at 20 µg/mL. Antibody validated: Western Blot in human samples; Immunohistochemistry in mouse samples and Immunofluorescence in mouse samples. All other applications and species not yet tested.

### Isotype

IgG

### Clonality

Polyclonal

### MW

Predicted: 301 kDa Observed: 280 kDa

### Uniprot ID

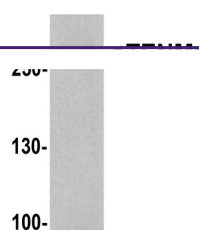
[Q9UKZ4](#)

### NCBI

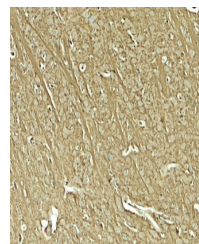
[NP\\_001156750](#)

### Dilution Range

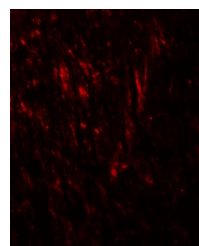
TENM1 antibody can be used for detection of TENM1 by Western blot at 1 - 2 µg/mL. Antibody can also be used for immunohistochemistry starting at 5 µg/mL. For immunofluorescence start at 20 µg/mL. Antibody validated: Western Blot in human samples; Immunohistochemistry in mouse samples and Immunofluorescence in mouse samples. All other applications and species not yet tested.



Western blot analysis of TENM1 in human ...



Immunohistochemistry of TENM1 in mouse brain...



Immunofluorescence of TENM1 in mouse brain...