

Product Datasheet

TET3 Antibody (orb1238811)

Description

TET3 Antibody

Species/Host

Rabbit

Reactivity

Human, Mouse, Rat

Conjugation

Unconjugated

Tested

ELISA, IF, IHC-P, WB

Applications

Immunogen

TET3 antibody was raised against a 17 amino acid synthetic peptide near the carboxy terminus of human TET3. The immunogen is located within amino acids 1520 - 1570 of TET3.

Target

TET3

Preservatives

TET3 Antibody is supplied in PBS containing 0.02% sodium azide.

Form/Appearance

Liquid

Concentration

1 mg/mL

Storage

TET3 antibody can be stored at 4°C for three months and -20°C, stable for up to one year. As with all antibodies care should be taken to avoid repeated freeze thaw cycles. Antibodies should not be exposed to prolonged high temperatures.

Note

For research use only

Application notes

TET3 antibody can be used for detection of TET3 by Western blot at 1 µg/mL. Antibody can also be used for immunohistochemistry starting at 2.5 µg/mL. For immunofluorescence start at 20 µg/mL. Antibody validated: Western Blot in human samples; Immunohistochemistry in human samples and Immunofluorescence in human samples. All other applications and species not yet tested.

Isotype

IgG

Clonality

Polyclonal

MW

183 kDa

Uniprot ID

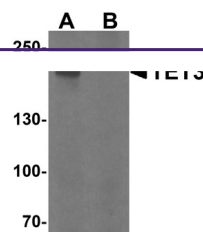
[O43151](#)

NCBI

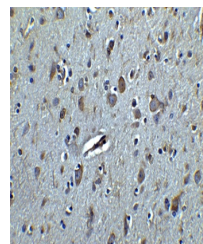
[NP_001274420](#)

Dilution Range

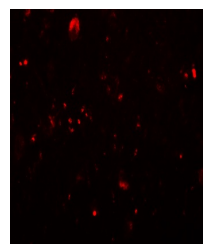
TET3 antibody can be used for detection of TET3 by Western blot at 1 µg/mL. Antibody can also be used for immunohistochemistry starting at 2.5 µg/mL. For immunofluorescence start at 20 µg/mL. Antibody validated: Western Blot in human samples;



Western blot analysis of TET3 in SK-N-SH...



Immunohistochemistry of TET3 in human br...



Immunofluorescence of TET3 in human brai...