

## Product Datasheet

### QSOX1 Antibody (orb1238777)

**Description**

**QSOX1 Antibody**

**Species/Host**

Rabbit

**Reactivity**

Human, Mouse

**Conjugation**

Unconjugated

**Tested**

ELISA, IF, IHC-P, WB

**Applications**

**Immunogen**

QSOX1 antibody was raised against a 17 amino acid peptide near the center of human QSOX1. The immunogen is located within amino acids 360 - 410 of QSOX1.

**Target**

QSOX1

**Preservatives**

QSOX1 antibody is supplied in PBS containing 0.02% sodium azide.

**Form/Appearance**

Liquid

**Concentration**

1 mg/mL

**Storage**

QSOX1 antibody can be stored at 4°C for three months and -20°C, stable for up to one year.

**Note**

For research use only

**Application notes**

QSOX1 antibody can be used for detection of QSOX1 by Western blot at 1 - 2 µg/mL. Antibody can also be used for immunohistochemistry starting at 5 µg/mL. For immunofluorescence start at 20 µg/mL. Antibody validated: Western Blot in mouse samples; Immunohistochemistry in human samples and Immunofluorescence in human samples. All other applications and species not yet tested.

**Isotype**

IgG

**Clonality**

Polyclonal

**MW**

Predicted: 65, 82 kDa Observed: 66 kDa

**Uniprot ID**

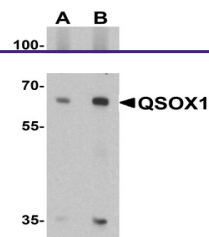
**O00391**

**NCBI**

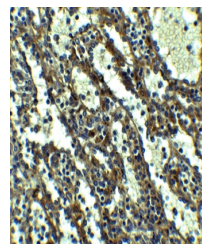
**NP\_002817**

**Dilution Range**

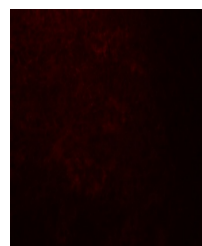
QSOX1 antibody can be used for detection of QSOX1 by Western blot at 1 - 2 µg/mL. Antibody can also be used for immunohistochemistry starting at 5 µg/mL. For immunofluorescence start at 20 µg/mL. Antibody validated: Western Blot in mouse samples; Immunohistochemistry in human samples and Immunofluorescence in human samples. All other applications and species not yet tested.



Western blot analysis of QSOX1 in EL4 ce...



Immunohistochemistry of QSOX1 in human S...



Immunofluorescence of QSOX1 in human spl...