

## Product Datasheet

### TLR10 Antibody (orb1238768)

## Description

## TLR10 Antibody

### Species/Host

Rabbit

### Conjugation

Unconjugated

### Tested

ELISA, IF, WB

### Applications

### Immunogen

TLR10 antibody was raised against a peptide corresponding to 14 amino acids near the middle of human TLR10. The immunogen is located within amino acids 600 - 650 of TLR10.

### Target

TLR10

### Preservatives

TLR10 Antibody is supplied in PBS containing 0.02% sodium azide.

### Form/Appearance

Liquid

### Concentration

1 mg/mL

### Storage

TLR10 antibody can be stored at 4°C for three months and -20°C, stable for up to one year. As with all antibodies care should be taken to avoid repeated freeze thaw cycles. Antibodies should not be exposed to prolonged high temperatures.

### Note

For research use only

### Application notes

TLR10 antibody can be used for detection of TLR10 by Western blot at 0.5 to 1 µg/mL. Despite its predicted size of ~90 kDa, a band corresponding to TLR10 is observed at ~75 kDa in immunoblot assays. For immunofluorescence start at 2 µg/mL. Antibody validated: Western Blot in human samples and Immunofluorescence in human samples. All other applications and species not yet tested.

### Isotype

IgG

### Clonality

Polyclonal

### Uniprot ID

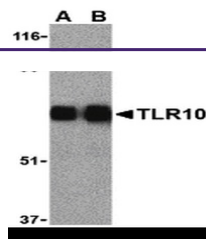
[Q9BXR5](#)

### NCBI

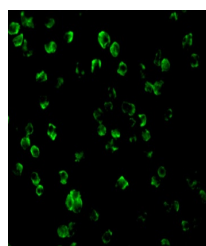
[AAQ88667](#)

### Dilution Range

TLR10 antibody can be used for detection of TLR10 by Western blot at 0.5 to 1 µg/mL. Despite its predicted size of ~90 kDa, a band corresponding to TLR10 is observed at ~75 kDa in immunoblot assays. For immunofluorescence start at 2 µg/mL. Antibody validated: Western Blot in human samples and Immunofluorescence in human samples. All other applications and species not yet tested.



Western blot analysis of TLR10 in human ...



Immunofluorescence of TLR10 in Daudi cel...