

Product Datasheet

RGS21 Antibody (orb1238762)

Description

RGS21 Antibody

Species/Host

Rabbit

Reactivity

Human

Conjugation

Unconjugated

Tested

ELISA, IF, IHC-P, WB

Applications
Immunogen

RGS21 antibody was raised against a 16 amino acid synthetic peptide near the center of human RGS21. The immunogen is located within amino acids 40 - 90 of RGS21.

Target

RGS21

Preservatives

RGS21 Antibody is supplied in PBS containing 0.02% sodium azide.

Form/Appearance

Liquid

Concentration

1 mg/mL

Storage

RGS21 antibody can be stored at 4°C for three months and -20°C, stable for up to one year. As with all antibodies care should be taken to avoid repeated freeze thaw cycles. Antibodies should not be exposed to prolonged high temperatures.

Note

For research use only

Application notes

RGS21 antibody can be used for detection of RGS21 by Western blot at 0.5 µg/mL. Antibody can also be used for immunocytochemistry starting at 2.5 µg/mL. For immunofluorescence start at 20 µg/mL. Antibody validated: Western Blot in human samples; Immunocytochemistry in human samples and Immunofluorescence in human samples. All other applications and species not yet tested.

Isotype

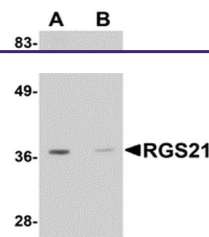
IgG

Clonality

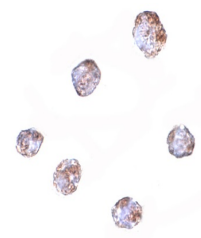
Polyclonal

Uniprot ID
Q2M5E4
NCBI
NP_001034241
Dilution Range

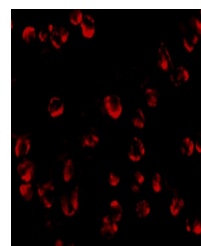
RGS21 antibody can be used for detection of RGS21 by Western blot at 0.5 µg/mL. Antibody can also be used for immunocytochemistry starting at 2.5 µg/mL. For immunofluorescence start at 20 µg/mL. Antibody validated: Western Blot in human samples; Immunocytochemistry in human samples and



Western blot analysis of RGS21 in HepG2 ...



Immunocytochemistry of RGS21 in HepG2 ce...



Immunofluorescence of RGS21 in HepG2 cel...