

Product Datasheet

TLR3 Antibody (orb1238761)

Description

TLR3 Antibody

Species/Host

Rabbit

Reactivity

Human, Mouse

Conjugation

Unconjugated

Tested

ELISA, ICC, IF, WB

Applications

Immunogen

TLR3 antibody was raised against a peptide corresponding to 15 amino acids near the amino terminus of human TLR3. The immunogen is located within amino acids 40 - 90 of TLR3.

Target

TLR3

Preservatives

TLR3 Antibody is supplied in PBS containing 0.02% sodium azide.

Form/Appearance

Liquid

Concentration

1 mg/mL

Storage

TLR3 antibody can be stored at 4°C for three months and -20°C, stable for up to one year. As with all antibodies care should be taken to avoid repeated freeze thaw cycles. Antibodies should not be exposed to prolonged high temperatures.

Note

For research use only

Application notes

TLR3 antibody can be used for detection of TLR3 by Western blot at 0.5 µg/mL. Antibody can also be used for immunocytochemistry starting at 10 µg/mL. For immunofluorescence start at 2 µg/mL. Antibody validated: Western Blot in mouse samples; Immunocytochemistry in human samples and Immunofluorescence in human samples. All other applications and species not yet tested.

Isotype

IgG

Clonality

Polyclonal

MW

Predicted: 88 kDa Observed: 91 kDa

Uniprot ID

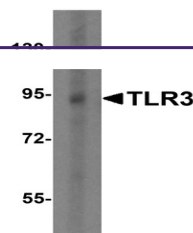
[O15455](#)

NCBI

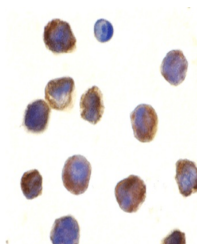
[O15455](#)

Dilution Range

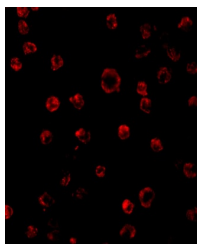
TLR3 antibody can be used for detection of TLR3 by Western blot at 0.5 µg/mL. Antibody can also be used for immunocytochemistry starting at 10 µg/mL. For immunofluorescence start at 2 µg/mL. Antibody validated: Western Blot in mouse samples;



Western blot analysis of TLR3 in EL4 cells...



Immunocytochemistry of TLR3 in K562 cells...



Immunofluorescence of TLR3 in K562 cells...