

Product Datasheet

RIPK1 Antibody (orb1238760)

Description

RIPK1 Antibody

Species/Host

Rabbit

Reactivity

Human, Mouse, Rat

Conjugation

Unconjugated

Tested

ELISA, IF, IHC-P, WB

Applications

Immunogen

RIPK1 antibody was raised against a 15 amino acid synthetic peptide from near the amino terminus of human RIPK1. The immunogen is located within amino acids 180 - 230 of RIPK1.

Target

RIPK1

Preservatives

RIPK1 Antibody is supplied in PBS containing 0.02% sodium azide.

Form/Appearance

Liquid

Concentration

1 mg/mL

Storage

RIPK1 antibody can be stored at 4°C for three months and -20°C, stable for up to one year. As with all antibodies care should be taken to avoid repeated freeze thaw cycles. Antibodies should not be exposed to prolonged high temperatures.

Note

For research use only

Application notes

RIPK1 antibody can be used for detection of RIPK1 by Western blot at 1 µg/mL. Antibody can also be used for immunohistochemistry starting at 2.5 µg/mL. For immunofluorescence start at 20 µg/mL. Antibody validated: Western Blot in rat samples; Immunohistochemistry in mouse samples and Immunofluorescence in mouse samples. All other applications and species not yet tested.

Isotype

IgG

Clonality

Polyclonal

Uniprot ID

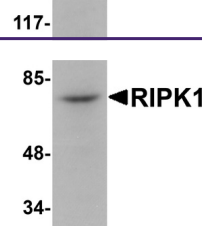
[Q13546](#)

NCBI

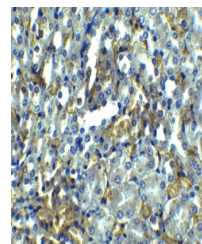
[NP_003795](#)

Dilution Range

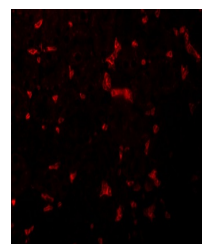
RIPK1 antibody can be used for detection of RIPK1 by Western blot at 1 µg/mL. Antibody can also be used for immunohistochemistry starting at 2.5 µg/mL. For immunofluorescence start at 20 µg/mL. Antibody validated: Western Blot in rat samples; Immunohistochemistry in mouse samples and



Western blot analysis of RIPK1 in rat ki...



Immunohistochemistry of RIPK1 in mouse k...



Immunofluorescence of RIPK1 in Mouse Kid...