

Product Datasheet

TLR5 Antibody (orb1238759)

Description

TLR5 Antibody

Species/Host

Rabbit

Reactivity

Human, Mouse

Conjugation

Unconjugated

Tested

ELISA, ICC, IF, WB

Applications

Immunogen

TLR5 antibody was raised against a peptide corresponding to 15 amino acids near the carboxy terminus of human TLR5. The immunogen is located within the last 50 amino acids of TLR5.

Target

TLR5

Preservatives

TLR5 Antibody is supplied in PBS containing 0.02% sodium azide.

Form/Appearance

Liquid

Concentration

1 mg/mL

Storage

TLR5 antibody can be stored at 4°C for three months and -20°C, stable for up to one year. As with all antibodies care should be taken to avoid repeated freeze thaw cycles. Antibodies should not be exposed to prolonged high temperatures.

Note

For research use only

Application notes

TLR5 antibody can be used for detection of TLR5 by Western blot at 1 to 2 µg/mL. Antibody can also be used for immunocytochemistry starting at 10 µg/mL. For immunofluorescence start at 10 µg/mL. Antibody validated: Western Blot in human samples; Immunocytochemistry in human samples and Immunofluorescence in human samples. All other applications and species not yet tested.

Isotype

IgG

Clonality

Polyclonal

MW

Predicted: 94 kDa Observed: 94 kDa

Uniprot ID

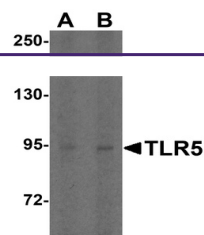
[O60602](#)

NCBI

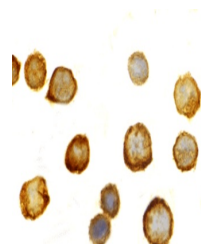
[NP_003259](#)

Dilution Range

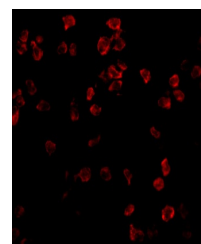
TLR5 antibody can be used for detection of TLR5 by Western blot at 1 to 2 µg/mL. Antibody can also be used for immunocytochemistry starting at 10 µg/mL. For immunofluorescence start at 10 µg/mL. Antibody validated: Western Blot in human samples;



Western blot analysis of TLR5 expression...



Immunocytochemistry of TLR5 in THP-1 cells...



Immunofluorescence of TLR5 in THP-1 cells...