

## Product Datasheet

### TLR9 Antibody (orb1238751)

**Description**
**TLR9 Antibody**
**Species/Host**

Rabbit

**Reactivity**

Human, Mouse, Rat

**Conjugation**

Unconjugated

**Tested**

ELISA, ICC, IF, WB

**Applications**
**Immunogen**

TLR9 antibody was raised against a peptide corresponding to 15 amino acids near the center of human TLR9. The immunogen is located within amino acids 840 - 890 of TLR9.

**Target**

TLR9

**Preservatives**

TLR9 Antibody is supplied in PBS containing 0.02% sodium azide.

**Form/Appearance**

Liquid

**Concentration**

1 mg/mL

**Storage**

TLR9 antibody can be stored at 4°C up to one year. Antibodies should not be exposed to prolonged high temperatures.

**Note**

For research use only

**Application notes**

TLR9 antibody can be used for detection of TLR9 by Western blot at 1 µg/mL. Antibody can also be used for immunocytochemistry starting at 2 µg/mL. For immunofluorescence start at 20 µg/mL. Antibody validated: Western Blot in human samples; Immunocytochemistry in human samples and Immunofluorescence in mouse samples. All other applications and species not yet tested.

**Isotype**

IgG

**Clonality**

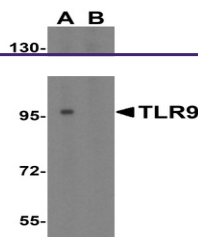
Polyclonal

**MW**

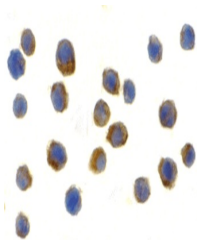
Predicted: 104, 111 kDa Observed: 97 kDa

**Uniprot ID**
[Q9NR96](#)
**NCBI**
[AAH32713](#)
**Dilution Range**

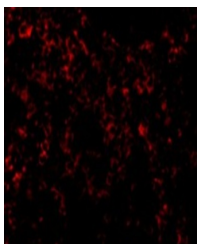
TLR9 antibody can be used for detection of TLR9 by Western blot at 1 µg/mL. Antibody can also be used for immunocytochemistry starting at 2 µg/mL. For immunofluorescence start at 20 µg/mL. Antibody validated: Western Blot in human samples; Immunocytochemistry in human samples and Immunofluorescence in mouse samples. All other



Western blot analysis of TLR9 in Jurkat ...



Immunocytochemistry of TLR9 in Jurkat ce...



Immunofluorescence of TLR9 in Mouse Sple...