

Product Datasheet

TLR9 Antibody (orb1238750)

Description

TLR9 Antibody

Species/Host

Rabbit

Reactivity

Human, Mouse

Conjugation

Unconjugated

Tested

ELISA, IF, IHC-P, WB

Applications

Immunogen

TLR9 antibody was raised against a peptide corresponding to 16 amino acids near the carboxy terminus of human TLR9. The immunogen is located within amino acids 960 - 1010 of TLR9.

Target

TLR9

Preservatives

TLR9 Antibody is supplied in PBS containing 0.02% sodium azide.

Form/Appearance

Liquid

Concentration

1 mg/mL

Storage

TLR9 antibody can be stored at 4°C for three months and -20°C, stable for up to one year. As with all antibodies care should be taken to avoid repeated freeze thaw cycles. Antibodies should not be exposed to prolonged high temperatures.

Note

For research use only

Application notes

TLR9 antibody can be used for detection of TLR9 by Western blot at 0.5 to 1 µg/mL. Antibody can also be used for immunohistochemistry starting at 2 µg/mL. For immunofluorescence start at 10 µg/mL. Antibody validated: Western Blot in mouse samples; Immunohistochemistry in mouse samples and Immunofluorescence in mouse samples. All other applications and species not yet tested.

Isotype

IgG

Clonality

Polyclonal

Uniprot ID

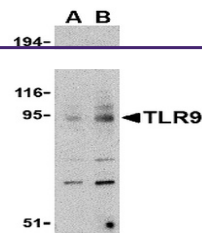
[Q9NR96](#)

NCBI

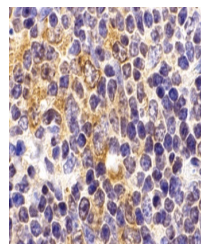
[AAH32713](#)

Dilution Range

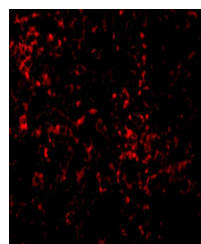
TLR9 antibody can be used for detection of TLR9 by Western blot at 0.5 to 1 µg/mL. Antibody can also be used for immunohistochemistry starting at 2 µg/mL. For immunofluorescence start at 10 µg/mL. Antibody validated: Western Blot in mouse samples; Immunohistochemistry in mouse samples and



Western blot analysis of TLR9 in mouse s...



Immunohistochemistry of TLR9 in mouse sp...



Immunofluorescence of TLR9 in mouse sple...