

## Product Datasheet

### TMEM59L Antibody (orb1238728)

**Description**

TMEM59L Antibody

**Species/Host**

Rabbit

**Reactivity**

Human, Mouse, Rat

**Conjugation**

Unconjugated

**Tested**

ELISA, IF, IHC-P, WB

**Applications**
**Immunogen**

TMEM59L antibody was raised against a 19 amino acid synthetic peptide near carboxy terminus of human TMEM59L. The immunogen is located within amino acids 220 - 270 of TMEM59L.

**Target**

TMEM59L

**Preservatives**

TMEM59L Antibody is supplied in PBS containing 0.02% sodium azide.

**Form/Appearance**

Liquid

**Concentration**

1 mg/mL

**Storage**

TMEM59L antibody can be stored at 4°C for three months and -20°C, stable for up to one year. As with all antibodies care should be taken to avoid repeated freeze thaw cycles. Antibodies should not be exposed to prolonged high temperatures.

**Note**

For research use only

**Application notes**

TMEM59L antibody can be used for detection of TMEM59L by Western blot at 1 µg/mL. Antibody can also be used for immunohistochemistry starting at 2.5 µg/mL. For immunofluorescence start at 20 µg/mL. Antibody validated: Western Blot in rat samples; Immunohistochemistry in mouse samples and Immunofluorescence in mouse samples. All other applications and species not yet tested.

**Isotype**

IgG

**Clonality**

Polyclonal

**Uniprot ID**

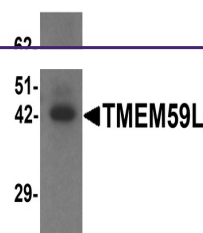
**Q9UK28**

**NCBI**

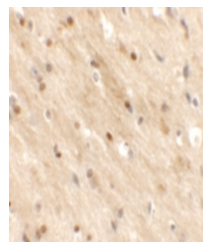
**NP\_036241**

**Dilution Range**

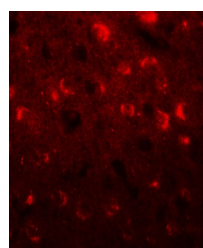
TMEM59L antibody can be used for detection of TMEM59L by Western blot at 1 µg/mL. Antibody can also be used for immunohistochemistry starting at 2.5 µg/mL. For immunofluorescence start at 20 µg/mL. Antibody validated: Western Blot in rat samples; Immunohistochemistry in mouse samples



Western blot analysis of TMEM59L in rat ...



Immunohistochemistry of TMEM59L in mouse...



Immunofluorescence of TMEM59L in mouse b...