

Product Datasheet

TMEM70 Antibody (orb1238727)

Description
TMEM70 Antibody
Species/Host

Rabbit

Reactivity

Human, Mouse, Rat

Conjugation

Unconjugated

Tested

ELISA, IF, IHC-P, WB

Applications
Immunogen

TMEM70 antibody was raised against a 14 amino acid synthetic peptide near the center of human TMEM70. The immunogen is located within amino acids 150 - 200 of TMEM70.

Target

TMEM70

Preservatives

TMEM70 Antibody is supplied in PBS containing 0.02% sodium azide.

Form/Appearance

Liquid

Concentration

1 mg/mL

Storage

TMEM70 antibody can be stored at 4°C for three months and -20°C, stable for up to one year. As with all antibodies care should be taken to avoid repeated freeze thaw cycles. Antibodies should not be exposed to prolonged high temperatures.

Note

For research use only

Application notes

TMEM70 antibody can be used for detection of TMEM70 by Western blot at 1 µg/mL. Antibody can also be used for immunohistochemistry starting at 5 µg/mL. For immunofluorescence start at 20 µg/mL. Antibody validated: Western Blot in human samples; Immunohistochemistry in rat samples and Immunofluorescence in rat samples. All other applications and species not yet tested.

Isotype

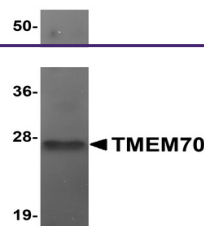
IgG

Clonality

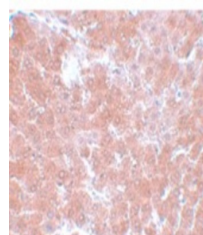
Polyclonal

Uniprot ID
Q9BUB7
NCBI
NP_060336
Dilution Range

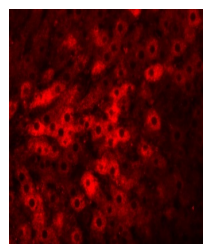
TMEM70 antibody can be used for detection of TMEM70 by Western blot at 1 µg/mL. Antibody can also be used for immunohistochemistry starting at 5 µg/mL. For immunofluorescence start at 20 µg/mL. Antibody validated: Western Blot in human samples; Immunohistochemistry in rat samples and



Western blot analysis of TMEM70 in human...



Immunohistochemistry of TMEM70 in rat li...



Immunofluorescence of TMEM70 in rat live...