

## Product Datasheet

### TMEM88 Antibody (orb1238726)

**Description**
**TMEM88 Antibody**
**Species/Host**

Rabbit

**Reactivity**

Human, Mouse, Rat

**Conjugation**

Unconjugated

**Tested**

ELISA, IF, IHC-P, WB

**Applications**
**Immunogen**

TMEM88 antibody was raised against a 19 amino acid synthetic peptide near the carboxy terminus of human TMEM88. The immunogen is located within amino acids 110 - 160 of TMEM88.

**Target**

TMEM88

**Preservatives**

TMEM88 Antibody is supplied in PBS containing 0.02% sodium azide.

**Form/Appearance**

Liquid

**Concentration**

1 mg/mL

**Storage**

TMEM88 antibody can be stored at 4°C for three months and -20°C, stable for up to one year. As with all antibodies care should be taken to avoid repeated freeze thaw cycles. Antibodies should not be exposed to prolonged high temperatures.

**Note**

For research use only

**Application notes**

TMEM88 antibody can be used for detection of TMEM88 by Western blot at 1 µg/mL. Antibody can also be used for immunohistochemistry starting at 2.5 µg/mL. For immunofluorescence start at 20 µg/mL. Antibody validated: Western Blot in human samples; Immunohistochemistry in mouse samples and Immunofluorescence in mouse samples. All other applications and species not yet tested.

**Isotype**

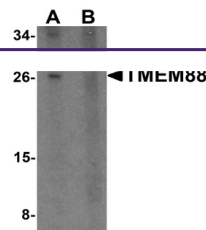
IgG

**Clonality**

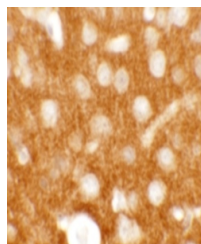
Polyclonal

**Uniprot ID**
**Q6PEY1**
**NCBI**
**EAW90125**
**Dilution Range**

TMEM88 antibody can be used for detection of TMEM88 by Western blot at 1 µg/mL. Antibody can also be used for immunohistochemistry starting at 2.5 µg/mL. For immunofluorescence start at 20 µg/mL. Antibody validated: Western Blot in human samples; Immunohistochemistry in mouse samples

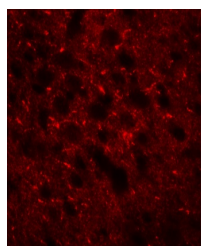


Western blot analysis of TMEM88 in human...



Immunohistochemistry of TMEM88 in mouse

...



Immunofluorescence of TMEM88 in mouse  
br...