

Product Datasheet

TRAF6 Antibody (orb1238697)

Description
TRAF6 Antibody
Species/Host

Rabbit

Reactivity

Human, Mouse, Rat

Conjugation

Unconjugated

Tested

ELISA, ICC, IF, WB

Applications
Immunogen

TRAF6 antibody was raised against a peptide corresponding to 14 amino acids near the C-terminus of human TRAF6. The immunogen is located within the last 50 amino acids of TRAF6.

Target

TRAF6

Preservatives

TRAF6 Antibody is supplied in PBS containing 0.02% sodium azide.

Form/Appearance

Liquid

Concentration

1 mg/mL

Storage

TRAF6 antibody can be stored at 4°C for three months and -20°C, stable for up to one year. As with all antibodies care should be taken to avoid repeated freeze thaw cycles. Antibodies should not be exposed to prolonged high temperatures.

Note

For research use only

Application notes

TRAF6 antibody can be used for detection of TRAF6 by Western blot at 1 µg/mL. Antibody can also be used for immunocytochemistry starting at 10 µg/mL. For immunofluorescence start at 20 µg/mL. Antibody validated: Western Blot in human samples; Immunocytochemistry in human samples and Immunofluorescence in human samples. All other applications and species not yet tested.

Isotype

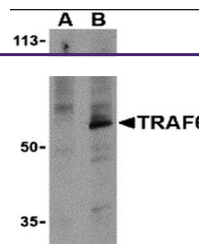
IgG

Clonality

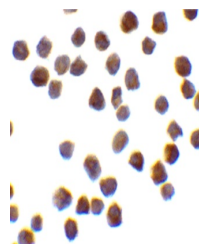
Polyclonal

Uniprot ID
Q9Y4K3
NCBI
NP_004611
Dilution Range

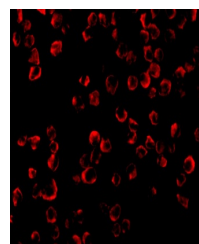
TRAF6 antibody can be used for detection of TRAF6 by Western blot at 1 µg/mL. Antibody can also be used for immunocytochemistry starting at 10 µg/mL. For immunofluorescence start at 20 µg/mL. Antibody validated: Western Blot in human samples; Immunocytochemistry in human samples and



Western blot analysis of TRAF6 in PC-3 c...



Immunocytochemistry of TRAF6 in K562 cel...



Immunofluorescence of TRAF6 in K562 cell...