

Product Datasheet

TREX1 Antibody (orb1238690)

Description

TREX1 Antibody

Species/Host

Rabbit

Reactivity

Human, Mouse, Rat

Conjugation

Unconjugated

Tested

ELISA, IF, IHC-P, WB

Applications

Immunogen

TREX1 antibody was raised against a 15 amino acid synthetic peptide near the center of human TREX1. The immunogen is located within amino acids 220 - 270 of TREX1.

Target

TREX1

Preservatives

TREX1 Antibody is supplied in PBS containing 0.02% sodium azide.

Form/Appearance

Liquid

Concentration

1 mg/mL

Storage

TREX1 antibody can be stored at 4°C for three months and -20°C, stable for up to one year. As with all antibodies care should be taken to avoid repeated freeze thaw cycles. Antibodies should not be exposed to prolonged high temperatures.

Note

For research use only

Application notes

TREX1 antibody can be used for detection of TREX1 by Western blot at 0.5 and 1 µg/mL. Antibody can also be used for immunohistochemistry starting at 2.5 µg/mL. For immunofluorescence start at 20 µg/mL. Antibody validated: Western Blot in human samples; Immunohistochemistry in human samples and Immunofluorescence in human samples. All other applications and species not yet tested.

Isotype

IgG

Clonality

Polyclonal

MW

Predicted: 33, 35, 41 kDa Observed: 31 kDa

Uniprot ID

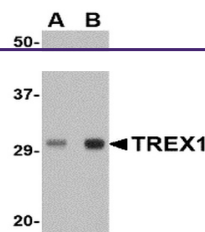
[Q9NSU2](#)

NCBI

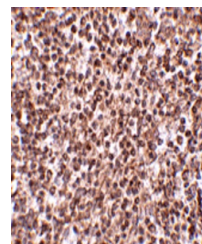
[NP_057465](#)

Dilution Range

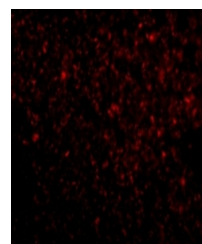
TREX1 antibody can be used for detection of TREX1 by Western blot at 0.5 and 1 µg/mL. Antibody can also be used for immunohistochemistry starting at 2.5 µg/mL. For immunofluorescence start at 20 µg/mL. Antibody validated: Western Blot in human



Western blot analysis of TREX1 in human ...



Immunohistochemistry of TREX1 in human s...



Immunofluorescence of TREX1 in Human Spl...