

## Product Datasheet

### Trim30 Antibody (orb1238682)

## Description

Trim30 Antibody

### Species/Host

Rabbit

### Reactivity

Mouse

### Conjugation

Unconjugated

### Tested

ELISA, IF, IHC-P, WB

### Applications

### Immunogen

TRIM30 antibody was raised against a 16 amino acid synthetic peptide near the carboxy terminus of the mouse TRIM30. The immunogen is located within amino acids 250 - 300 of TRIM30.

### Target

Trim30

### Preservatives

TRIM30 Antibody is supplied in PBS containing 0.02% sodium azide.

### Form/Appearance

Liquid

### Concentration

1 mg/mL

### Storage

TRIM30 antibody can be stored at 4°C for three months and -20°C, stable for up to one year. As with all antibodies care should be taken to avoid repeated freeze thaw cycles. Antibodies should not be exposed to prolonged high temperatures.

### Note

For research use only

### Application notes

TRIM30 antibody can be used for detection of TRIM30 by Western blot at 1 µg/mL. Antibody can also be used for immunohistochemistry starting at 10 µg/mL. For immunofluorescence start at 20 µg/mL. Antibody validated: Western Blot in mouse samples; Immunohistochemistry in mouse samples and Immunofluorescence in human samples. All other applications and species not yet tested.

### Isotype

IgG

### Clonality

Polyclonal

### Uniprot ID

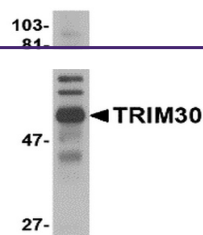
**P15533**

### NCBI

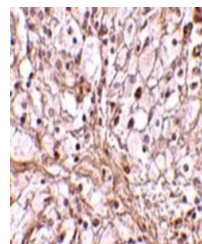
**NP\_033125**

### Dilution Range

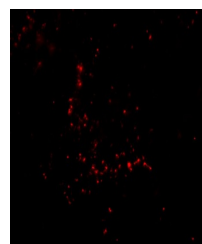
TRIM30 antibody can be used for detection of TRIM30 by Western blot at 1 µg/mL. Antibody can also be used for immunohistochemistry starting at 10 µg/mL. For immunofluorescence start at 20 µg/mL. Antibody validated: Western Blot in mouse samples; Immunohistochemistry in mouse samples



Western blot analysis of TRIM30 in mouse...



Immunohistochemistry of TRIM30 in mouse ...



Immunofluorescence of TRIM30 in Human Ov...