

Product Datasheet

TRPC3 Antibody (orb1238669)

Description
TRPC3 Antibody
Species/Host

Rabbit

Reactivity

Human, Mouse

Conjugation

Unconjugated

Tested

ELISA, IF, IHC-P, WB

Applications
Immunogen

TRPC3 antibody was raised against a 14 amino acid synthetic peptide from near the carboxy terminus of human TRPC3. The immunogen is located within amino acids 760 - 810 of TRPC3.

Target

TRPC3

Preservatives

TRPC3 Antibody is supplied in PBS containing 0.02% sodium azide.

Form/Appearance

Liquid

Concentration

1 mg/mL

Storage

TRPC3 antibody can be stored at 4°C up to one year. Antibodies should not be exposed to prolonged high temperatures.

Note

For research use only

Application notes

TRPC3 antibody can be used for the detection of TRPC3 by Western blot at 1 - 2 µg/mL. Antibody can also be used for immunohistochemistry starting at 2 µg/mL. For immunofluorescence start at 20 µg/mL. Antibody validated: Western Blot in human samples; Immunohistochemistry in mouse samples and Immunofluorescence in mouse samples. All other applications and species not yet tested.

Isotype

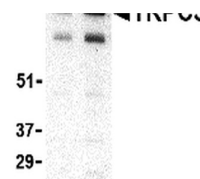
IgG

Clonality

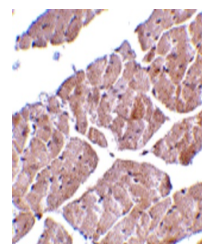
Polyclonal

Uniprot ID
Q13507
NCBI
CAA74083
Dilution Range

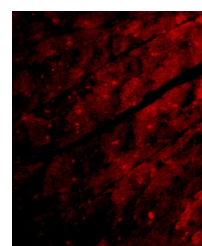
TRPC3 antibody can be used for the detection of TRPC3 by Western blot at 1 - 2 µg/mL. Antibody can also be used for immunohistochemistry starting at 2 µg/mL. For immunofluorescence start at 20 µg/mL. Antibody validated: Western Blot in human samples; Immunohistochemistry in mouse samples and Immunofluorescence in mouse samples. All other applications and species not yet tested.

A B


Western blot analysis of TRPC3 in human ...



Immunohistochemistry of TRPC3 in mouse h...



Immunofluorescence of TRPC3 in Mouse Hea...