

## Product Datasheet

### TSC1 Antibody (orb1238664)

**Description**

TSC1 Antibody

**Species/Host**

Rabbit

**Reactivity**

Human, Mouse, Rat

**Conjugation**

Unconjugated

**Tested**

ELISA, ICC, IF, WB

**Applications**

**Immunogen**

TSC1 antibody was raised against a 15 amino acid synthetic peptide from the middle region of human TSC1. The immunogen is located within amino acids 220 - 270 of TSC1.

**Target**

TSC1

**Preservatives**

TSC1 Antibody is supplied in PBS containing 0.02% sodium azide.

**Form/Appearance**

Liquid

**Concentration**

1 mg/mL

**Storage**

TSC1 antibody can be stored at 4°C for three months and -20°C, stable for up to one year. As with all antibodies care should be taken to avoid repeated freeze thaw cycles. Antibodies should not be exposed to prolonged high temperatures.

**Note**

For research use only

**Application notes**

TSC1 antibody can be used for the detection of TSC1 by Western blot at 1 µg/mL. Antibody can also be used for immunocytochemistry starting at 2 µg/mL. For immunofluorescence start at 2 µg/mL. Antibody validated: Western Blot in mouse samples; Immunocytochemistry in mouse samples and Immunofluorescence in mouse samples. All other applications and species not yet tested.

**Isotype**

IgG

**Clonality**

Polyclonal

**MW**

Predicted: 128 kDa Observed: 135 kDa

**Uniprot ID**

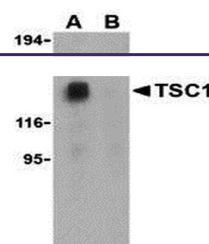
[Q92574](#)

**NCBI**

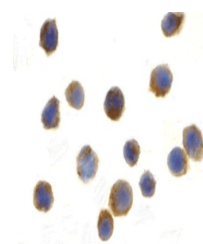
[AAC51674](#)

**Dilution Range**

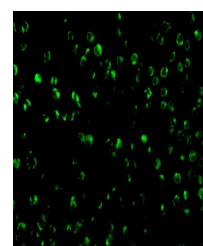
TSC1 antibody can be used for the detection of TSC1 by Western blot at 1 µg/mL. Antibody can also be used for immunocytochemistry starting at 2 µg/mL. For immunofluorescence start at 2 µg/mL. Antibody validated: Western Blot in mouse samples;



Western blot analysis of TSC1 in EL4 cells...



Immunocytochemistry of TSC1 in EL4 cells...



Immunofluorescence of TSC1 in L1210 cell...